



Advanced Surgical Product Catalog



To learn more about these and other innovative products,
call **866-4CONMED** or visit **www.CONMED.com**

Ordering Information	2
----------------------------	---

ACCESS

AirSeal® iFS	
iFS Connector for Bottle Gas	4
iFS Carts, Valves, & Towers	4
High Pressure Hoses for Bottle Gas	4
iFS Preventative Maintenance and Service Plans	4
iFS Connector for House/Central Gas	5
iFS Low Pressure Hoses for House/Central Gas	5
AirSeal® Tube Sets & Access Ports	6
BluView™ Trocars	7
Insufflation Needles & Accessories	8

ENERGY

Argon Beam Coagulation (ABC®)

HelixAR™ with ABC® Technology

HelixAR™ System	10
Footswitches, Argon Gas Tanks, & Stacking Adapter	10
Laparoscopic Handpieces & Probes	11
Dissecting Electrodes	12
Bend-A-Beam®	12

Dispersive Electrodes

SureFit™	13
ThermoGard™	13
MacroLyte™	13

Electrosurgical Generators

System 5000™	14
System 2450™	15

Electrosurgical Accessories

GoldLine® Pencils	16
MicroNeedles	16
ValueBlue™ Pencils	17
Active Electrodes	18
Dispersive Electrodes	20
Electrosurgical Forceps	22
Electrosurgical Cables & Adapters	24
Laparoscopic Electrodes & Accessory Cables	26

INSTRUMENTS

Laparoscopic Instruments

LaparoVue® Visibility System	28
DetachaTip® Instruments	29
Disposable Hand Instruments	32

Uterine Manipulator

VCare® Plus	33
VCare® DX Plus	33

Suction/Irrigation

Core™ Suction/Irrigation Systems	34
Universal Plus®	36
Irrigation Pumps	38

Ligation/Skin Stapler

Reflex® ELC530 Clip Applicators	39
Reflex® Series Skin Staplers/Extractors	39

Specimen Bags

Disposable Laparoscopic Specimen Bags	40
---	----

Specialty Products

Veress Needles	42
Puncture Closure Device	42
Kittner Blunt Dissectors	42
Aspiration Needle	42
Anti-Fog Kit	42

SMOKE MANAGEMENT

Surgical Smoke Evacuators

VisiClear®	44
ViroVac®	45
ClearView™	45
Porta PlumeSafe® 604	46
PlumeSafe® Turbo	47

Surgical Smoke Evacuation Pencils & Pencil Adapters

PlumePen® Smoke Evacuation Pencils	48
GoldVac® Smoke Evacuation Pencils	50
GoldVac® UltraClean Electrodes	50
SnapEvac® Smoke Evacuation Pencil Adapters	51
ClearVac® Smoke Evacuation Pencils	51
PenAdapt® Smoke Evacuation Pencil Adapters	52
Smoke Evacuation Tubing & Accessories	53

Laparoscopic Solutions

PlumePort® ActiV®	56
PlumePort® SEO	56
PlumePort®	57
PlumePort® SEV	57
PlumePort® SE	57

Filters - For Buffalo Filter Evacuators

ViroSafe® Filters	58
-------------------------	----

Filters - For Wall & Portable Suction Systems

BILF150 Multi-Use In-Line Filter	62
BILF200 Multi-Use In-Line Filter	62
AER Defense FilterOne	62

Filters - For Competitive Replacement

Smoke Evacuator Filter for Stryker Neptune 2 and Neptune 3	63
Berchtold TeleVac & TeleVac LT	63
Berchtold Phoenix XS or X3 Filter	63
StrykeVac 1 & 2 ViroSafe® Filter	63
StrykeVac 3 ViroSafe® Filter	64
TRUMPF ViroSafe® Filter (EasyVac Filter for TRUMPF EasyVac)	64
Valleylab Optimum System Filters & Pre-filters	64

Accessories

EZLink®	65
Pneumatic Footswitch	65
Virosafe® Fluid Trap	65
Direct Connect Cables	65
PlumePen® Pro Capture Ports	66
Y Adapter	66
LaseAdapt® SC Contour TRL Hand Piece Adapter	66
LaseAdapt® ProFractional Therapy Hand Piece Adapter	66
LaseAdapt® Hand Piece Adapter Clips	66
Armstand	67
EvacuCart™	67
ViroVac® Wall Mount Kit	67
Smoke Accessories Basket	67

CONTINUING EDUCATION COURSES 68

To Place Your Order

Please contact your local Sales Representative or Sales Office and provide a purchase order number, billing and shipping instructions, terms, product catalog number and description and valid CONMED quotation, and quantity and pricing to one of the following:

Customer Support

If you encounter a problem or need technical assistance, contact your CONMED Sales Representative or Customer Service. Refer to the Customer Service telephone numbers listed below.

CONMED U.S. Customer Service

Phone: +1(800) 448-6506 Fax: +1(800) 438-3051

CONMED International Customer Service

Phone: +1(315) 797-8375 Fax: +1(315) 735-6235

Tech Support: +1(800) 552-0138

AIRSEAL U.S. Customer Service

Phone: +1(877) 509-3947 (Option 1) Fax: +1(877) 509-3950

AIRSEAL U.S. Technical Support

Phone: +1(877) 509-3947 (Option 3)

AIRSEAL U.S. Medical Emergency

Phone: +1(877) 509-3947 (Option 4)

Terms and Conditions

All CONMED products are manufactured and produced in compliance with the following quality system standards:

- 21CFR 820, US FDA Quality System Regulation
- CMDCAS
- ISO13485
- European MDD, Annex II and V

All products may not be available for sale in your region. For information on pricing and product availability, please contact your local CONMED representative.

All prices and specifications are subject to change without notice.

All prices are F.O.F. Utica, New York; Centennial, Colorado; Atlanta, Georgia (F.O.B. Drop Shipment Points where applicable).

CREDIT TERMS: Net 30

Limited Service Warranty

For a period of two years following the date of shipment, CONMED Corporation warrants electrosurgical units against any defects in materials or workmanship and will repair or replace (at CONMED's discretion), the same without charge, provided that routine maintenance, as specified in the service manual, has been performed using replacement parts approved by CONMED. This warranty is void if the product is used in a manner or for purposes other than intended.

Extended warranties are available. Please contact your local CONMED Territory Manager, Customer Service, or Technical Services for more information.

Return Goods Policy

CONMED products may be returned for credit subject to the following:

1. Returned products, except products that are obsolete, discontinued, damaged, and specialty products, may be returned within 60 days after date of purchase. 50L Insufflator may be returned within 45 days after date of purchase.
2. A copy of the invoice number and date of purchase and a Return Authorization Number must accompany the returned goods with the reason for the return stated in writing. Contact CONMED Customer Service for the Return Authorization Number.
3. All returned goods will be subject to a minimum of 15% restocking charge. The exact amount of credit to be given, if any, will be determined by a Quality Assurance inspection. Sterile packaged products may be returned for credit only if returned in the original, unopened shelf package.
4. If the return is due to our error in shipping, full credit will be given.
5. All returns should be addressed as indicated by Return Authorization.

Extended Service Warranty

Extended warranty agreements for the AirSeal iFS may be purchased at any time – before, during or after the original warranty expiration.

Extended warranty's may be purchased for System 2450, System 5000, and HelixAR at any time - before the original warranty expiration date.

Customers can maintain the warranty for up to seven years from date of shipment per the agreement terms listed in Option A of the Extended Warranty Form. Customers can also purchase an extended warranty per the terms listed in Option B of the Extended Warranty form.

If product is under warranty, the customer is responsible only for shipping the product to CONMED; CONMED is responsible for shipping the product back to the customer. If the product is out of warranty, the customer is responsible for shipping the product to and from CONMED.

Quality Policy

CONMED is committed to maintaining a quality system that provides for safe and effective products and services that meet the needs and requirements of our patients, customers, and company stakeholders.

ACCESS





IFS-HPH4



IFS-HPH2



IFS-HPH3

AirSeal® System

The AirSeal iFS is the World's first "3 in 1" access management system and features unmatched capabilities in providing a stable pneumoperitoneum, constant smoke evacuation and valve-free access.

AirSeal® iFS

AirSeal iFS, 120V..... AS-iFS1

AirSeal iFS, 230V..... AS-iFS2

iFS Bottle Gas Connector (Required for bottle gas)

Required Connector

Must be installed on the iFS (37° flare fitting) iFS-BC1

AirSeal® iFS Carts

Cart with Bottle Rack, Holds Two "E" Size CO2 Tanks..... AS-iCART

Cart with Bottle Rack, Holds Two "E" Size CO2 Tanks,
Switching Valve and Hoses included AS-iCART-V

Cart with Bottle Rack, Holds Two 6" (160mm) Bottle
Gas Tanks AS-iCART-6

Cart with Bottle Rack, Holds Two 6" (160mm) Bottle
Gas Tanks, and Switching Valve..... AS-iCART-6V

iFS Valve

Switching Valve, (2) Yoke Pin Index with 18" Supply Hoses,
(1) 36" Connection Hose, (1) 90° Swivel, (1) Mounting Bracket.... iFS-Valve1

iFS Tower

(1) Yoke Pin Index mounted Switching Valve, (1) Yoke Pin Index with
18" Supply Hose and (1) 36" Connection Hose, (1) 90° Swivel.... iFS-Tower1

Add-on: 120" High Pressure Hose to "E" Size CO2 Tanks..... iFS-HPH120

iFS High Pressure Hoses for Bottle Gas

36" High Pressure Hose with a Pin Index Yoke to connect to
"E" Size CO2 Tanks with a Pin Index Cylinder Valve..... iFS-HPH4

1.5m High Pressure Hose with a Pin Index Yoke to connect to
"E" Size CO2 Tanks with a DIN Bottle Gas Tanks iFS-HPH2

1.5m High Pressure Hose with a Pin Index Yoke to connect to
"E" Size CO2 Tanks with an ISO Bottle Gas Tanks iFS-HPH3

iFS Preventative Maintenance and Service Plans

2 Year Preventative Maintenance..... iFS-2PM

12 Month Service Plan iFS-SP12

24 Month Service Plan iFS-SP24

36 Month Service Plan iFS-SP36

48 Month Service Plan iFS-SP48

iFS House/Central Gas Connector (Required for house gas)

Required Connector: Must be installed on the iFS

DISS Fitting..... iFS-WC1

NIST Fitting (International)..... iFS-WC2

iFS Low Pressure Hoses for House (Central) Gas *US*

36" Low Pressure Hose to connect to a DISS Wall Connection and iFS-WC1 Connector.....SGQ-584CE

60" Low Pressure Hose to connect to a DISS Wall Connection and iFS-WC1 Connector.....SGQ-586CE

180" Low Pressure Hose to connect to a DISS Wall Connection and iFS-WC1 Connector.....SGQ-582CE

240" Low Pressure Hose to connect to a DISS Wall Connection and iFS-WC1 Connector.....SGQ-583CE

390" Low Pressure Hose to connect to a DISS Wall Connection and iFS-WC1 Connector.....SGQ-585CE

240" Low Pressure Hose to connect to a Chemetron Wall Connection and iFS-WC1 Connector.....SGQ-587

iFS Low Pressure Hoses for House (Central) Gas *Intl*

3m Low Pressure Hose to connect to a DIN Wall Connection with iFS-WC2 Connector..... SGQ-592CE

5m Low Pressure Hose to connect to a DIN Wall Connection with iFS-WC2 Connector..... SGQ-593CE

3m Low Pressure Hose to connect to a AGA Wall Connection with iFS-WC2 Connector..... SGQ-594CE

5m Low Pressure Hose to connect to a AGA Wall Connection with iFS-WC2 Connector..... SGQ-595CE

3m Low Pressure Hose to connect to a NF Wall Connection with iFS-WC2 Connector..... SGQ-588CE

5m Low Pressure Hose to connect to a NF Wall Connection with iFS-WC2 Connector..... SGQ-589CE

3m Low Pressure Hose to connect to a UNI Wall Connection with iFS-WC2 Connector..... SGQ-590CE

5m Low Pressure Hose to connect to a UNI Wall Connection with iFS-WC2 Connector..... SGQ-591CE



DIN



AGA



NF



UNI



ASM-EVAC1



SEM-EVAC



SIM-TUB

AirSeal Filtered Tube Sets

The AirSeal iFS is capable of operating in three distinct modes, each of which uses a specific filtered tube set to maximize system performance.

For use with iFS AirSeal Mode

Tri-Lumen Filtered Tube Set, 6/Box..... ASM-EVAC1

For use with iFS Smoke Evacuation Mode

Bifurcated Smoke Evac Filtered Tube Set, 6/Box SEM-EVAC

For use with iFS Standard Insufflation Mode,

Single Lumen Filtered Tube Set, 10/Box SIM-TUB

AirSeal® Access Ports

- Valve-free access to abdominal cavity
- Intact specimen removal



iAS5-75LP

5mm Access Port and Low Profile Obturator with Bladeless Optical Tip, 75mm Length, 6/Box..... iAS5-75LP



iAS5-100LP

5mm Access Port and Low Profile Obturator with Bladeless Optical Tip, 100mm Length, 6/Box..... iAS5-100LP



iAS5-120LP

5mm Access Port and Low Profile Obturator with Bladeless Optical Tip, 120mm Length, 6/Box iAS5-120LP



iASB5-150

5mm Smooth Access Port with Blunt Tip, 150mm Length (for use with single site surgical platforms), 6/Box iASB5-150



iAS8-100LP

8mm Access Port and Low Profile Obturator, with Bladeless Optical Tip, 100mm Length, 6/Box iAS8-100LP



iAS8-120LP

8mm Access Port and Low Profile Obturator, with Bladeless Optical Tip, 120mm Length, 6/Box iAS8-120LP



iAS12-100LPi

12mm Access Port and Palm Grip Obturator, with Bladeless Optical Tip, 100mm Length, 6/Box iAS12-100LPi



iASB12-100

12mm Access Port and Obturator, with Blunt Tip, 100mm Length, 6/Box iASB12-100



iAS12-120LPi

12mm Access Port and Palm Grip Obturator, with Bladeless Optical Tip, 120mm Length, 6/Box iAS12-120LPi



iASB12-120

12mm Access Port and Obturator, with Blunt Tip, 120mm Length, 6/Box iASB12-120



iAS12-150LPi

12mm Access Port and Palm Grip Obturator, with Bladeless Optical Tip, 150mm Length, 6/Box iAS12-150LPi

BluView™ Trocars (OUS Only)

Single use, disposable trocar

Optical Trocars

5mm Trocar and Cannula, 70mm Length.....	BV-5X70
5mm Trocar and Cannula, 100mm Length.....	BV-5X100
5mm Obturator and Cannula, 150mm Length.....	BV-5X150
11mm Obturator and Cannula, 70mm Length.....	BV-11X70
11mm Trocar and Cannula, 100mm Length.....	BV-11X100
11mm Obturator and Cannula, 150mm Length.....	BV-11X150
12mm Obturator and Cannula, 70mm Length.....	BV-12X70
12mm Trocar and Cannula, 100mm Length.....	BV-12X100
12mm Obturator and Cannula, 150mm Length.....	BV-12X150

Bladeless Trocars

15mm Obturator and Cannula, 100mm Length.....	BV-15X100BLS
---	--------------

Bladed Trocars

5mm Trocar and Cannula, 70mm Length.....	BV-5X70-BLD
5mm Trocar and Cannula, 100mm Length.....	BV-5X100-BLD
5mm Obturator and Cannula, 150mm Length.....	BV-5X150-BLD
11mm Trocar and Cannula, 100mm Length.....	BV-11X100-BLD
11mm Obturator and Cannula, 150mm Length.....	BV-11X150-BLD
12mm Obturator and Cannula, 70mm Length.....	BV-12X70-BLD
12mm Trocar and Cannula, 100mm Length.....	BV-12X100-BLD
12mm Obturator and Cannula, 150mm Length.....	BV-12X150-BLD
15mm Obturator and Cannula, 100mm Length.....	BV-15X100-BLD

Blunt Tip Trocars

11mm Trocar and Cannula, 100mm Length.....	BV-11X100-HSS
12mm Trocar and Cannula, 100mm Length.....	BV-12X100-HSS

Universal Cannulas (for use with Optical or Bladed Obturators)

5mm Cannula, 70mm Length	BV-5X70-CAN
5mm Cannula, 100mm Length	BV-5X100-CAN
11mm Cannula, 70mm Length	BV-11X70-CAN
11mm Cannula, 100mm Length	BV-11X100-CAN
11mm Cannula, 150mm Length	BV-11X150-CAN
12mm Cannula, 70mm Length	BV-12X70-CAN
12mm Cannula, 100mm Length	BV-12X100-CAN
12mm Cannula, 150mm Length	BV-12X150-CAN





Disposable Insufflation Needles and Tubing/Filter Set Systems

Laparolight™ Veress Needle, 12cm (120mm) 12/cs	LLVN12012
Laparolight™ Veress Needle, 15cm (150mm) 12/cs	LLVN15012
Pneumoperitoneum Insufflation Needle, 14 gauge, 12cm, with stainless steel tip guard and band indicator 10/cs	60-6050-001
Pneumoperitoneum Insufflation Needle, 14 gauge, 15cm, with stainless steel tip guard and band indicator 10/cs	60-6050-002
Insufflation Tubing (10' length) and 0.1 micron hydrophobic filter assembly with suction type connector 10/cs	60-6050-097
Insufflation Tubing (10' length) and 0.1 micron hydrophobic filter assembly with "O" ring connector 10/cs	60-6050-098
Insufflation Tubing (10' length) and 0.1 micron hydrophobic filter assembly with luer lock connector 10/cs	60-6050-099

AirSeal iFS Miscellaneous Parts and Accessories

iFS Fuse, 10 Amp	iFS-Fuse
iFS Connector O-Ring.....	iFS-ORING
Pin Index Yoke Seal, 10 Pack	iFS-SEAL
Connector for High Pressure Gas Hose	iFS-CON1
Upper Gas Bottle Assembly for use on -2R Carts.....	SQ-22213
Switching Valve for Low Pressure House Gas	iFS-HGSV
160mm Bottle Rack Base for use on -6 Carts	SQ-85601038
Pin Index Yoke JIC Male.....	SGQ-545
Pin Index Yoke 1/4 NFT Male	SCG-547
Valve Bracket for use on -V Carts and -2R Carts	iCART-BRACKET

ENERGY





60-8800-SYS



60-8480-001



60-8849-001

HelixAR™ Electrocauter with Argon Beam Coagulation (ABC®)

The HelixAR combines the advanced specialty modes of a premium ESU with the benefits of CONMED's latest ABC® Technology and is intended for use in both open and laparoscopic procedures.

HelixAR System

- HelixAR System, ABC Generator and Cart60-8800-SET
- Includes HelixAR System, ABC Generator and Cart,
with Monopolar and Bipolar Footswitch60-8800-SYS

Footswitches

- ABC Single Pedal Footswitch, 15'60-8475-001
- ABC Single Pedal Footswitch, 30'60-8470-001
- HelixAR Wireless Footswitch Kit
(Monopolar & ABC Footswitch, AA Batteries, Receiver/Antenna,
Operator's Manual*)60-8480-001
- Monopolar Dual Pedal Footswitch, 15'60-6700-001
- Bipolar Single Footswitch, 15'60-5103-002

Argon Gas Tanks

- D Size with 33 Cubic Feet (934.46 liters) capacity 99.998%
Pure Argon Gas included 136050
- Empty D Size with 33 Cubic Feet (934.46 liters) capacity 136051

Stacking Adapter

- Adapter allows System 5000 ESUs
to be mounted to HelixAR on a Mobile Pedestal60-8849-001

* Assembly required. Refer to Wireless Footswitch Operator's Manual for more information.

ABC® Handpieces and Laparoscopic Probes

Designed for versatility and performance, ABC® Handpieces and Probes enable surgeons to extend the benefits of ABC Technology to their patients. Each device is carefully designed for optimal clinical performance in a variety of open or laparoscopic procedures.

Hand Control (Disposable)

Triple Option Hand Control Handpiece
with 10' (3.05m) cord. Allows use of Monopolar Cut,
Coagulation and ABC..... 130321

Single Function Hand Control Handpiece
with 10' (3.05m) cord* 130344

Foot Control (Disposable)

45° Angled ABC Foot Control Handpiece
with 10' (3.05m) cord* 130345

Foot Control Laparoscopic Probes (Disposable)

Laparoscopic 10mm ABC Probe with 10' (3.05m) cord.
28cm working length* 130342

Laparoscopic 5mm ABC Probe with 10' (3.05m) cord.
28cm working length..... 160655

Hand Control Laparoscopic Probes (Disposable)

Laparoscopic 5mm ABC Probe with 10' (3.05m) cord.
28cm working length..... 160656

Laparoscopic 5mm ABC Probe with 10' (3.05m) cord.
36cm working length..... 160636

Laparoscopic 5mm ABC Probe with 10' (3.05m) cord.
44cm working length..... 160644



*Can be used with ABC Dissecting Electrodes



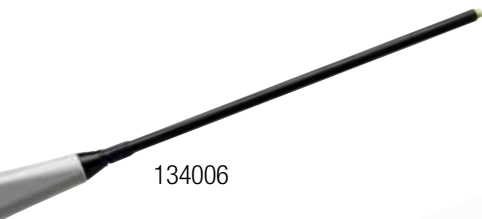
139330



139331



134003



134006



134009

ABC Dissecting Electrodes

ABC Technology in contact mode allows surgeons to dissect while employing the benefits of Argon Beam Coagulation. Surgeons can also continue to use ABC in non-contact mode simply by pulling the ABC Dissecting Electrodes away from tissue.

Simple to use, ABC Dissecting Electrodes attach to a CONMED ABC handpiece to convert from Argon Beam Coagulation to Argon Beam Dissect. By forcing argon gas over an electrode in contact or non-contact mode, ABC Dissecting Electrodes may provide the following benefits for surgical procedures:

- ABC Dissecting Blade Electrode converts Argon Beam Coagulation to Argon Beam Dissect, 20/Case 139330
- ABC Dissecting Blunt Needle Electrode converts Argon Beam Coagulation to Argon Beam Dissect, 20/Case..... 139331

Bend-A-Beam®

- Reduced blood loss
- Effective on high impedance tissue such as bone
- Reduced smoke plum for better visualization

- 3" (7.6cm) Bend-a-Beam Single Function Malleable ABC Hand Control Handpiece with 10' (3.05m) Cord. Allows Use of Monopolar ABC Coagulation. Single Use, Sterile 10/case 134003
- 6" (15.2cm) Bend-a-Beam Single Function Malleable ABC Hand Control Handpiece with 10' (3.05m) Cord. Allows Use of Monopolar ABC Coagulation. Single Use, Sterile 10/case 134006
- 9" (22.8cm) Bend-a-Beam Single Function Malleable ABC Hand Control Handpiece with 10' (3.05m) Cord. Allows Use of Monopolar ABC Coagulation. Single Use, Sterile 10/case 134009

Dispersive Electrodes

CONMED's Dispersive Electrodes are globally renowned for their safety, quality, and comfort. With three brands of dual- and single-foil options, CONMED suits a multitude of patients, technologies, and budgets.

SureFit™ Dual Dispersive Electrodes

SureFit Dual Dispersive Electrode (for patients > 4.8 lbs.),
Single use, Pre-attached 10' (3.05m) Cable,
100/case, 25/box.....410-2000

SureFit Dual Dispersive Electrode (for patients > 4.8 lbs.),
Single use, Pre-attached 15' (4.575m) Cable,
100/case, 25/box410-2100

SureFit Dual Dispersive Electrode (for patients > 4.8 lbs.),
Single use, without Cable, resealable, 5-pack pouch
(use reusable cable # T229), 100/case, 5/pkg410-2200

ThermoGard® Plus ABC Dispersive Electrodes

Adult Dual Dispersive Electrode (for patients >15 kg),
Single use, Pre-attached 10' (3.05m) Cable, 40/case 1/pkg7-382

Pediatric Dual Dispersive Electrode (for patients 5-15 kg),
Single use, Pre-attached 10' (3.05m) Cable, 40/case 1/pkg.....7-383

Adult Single Dispersive Electrode (for patients >15 kg),
Single use, Pre-attached 10' (3.05m) Cable, 40/case 1/pkg.....7-384

ThermoGard® Dispersive Electrodes

Adult Single Dispersive Electrode (for Patients >15 kg), Single Use,
Pre-attached 10' (3.05m) Cable, 80/case 1/pkg51-7810

Adult Dual Dispersive Electrode (for Patients >15 kg), Single Use,
Pre-attached 10' (3.05m) Cable, 80/case 1/pkg51-7310

Adult Dual Dispersive Electrode (for Patients >15 kg), Single use,
without Cable (use cable T-229), 80/case 1/pkg.....51-7410

Pediatric Dual Dispersive Electrode (for Patients 5-15 kg), Single use,
Pre-attached 10' (3.05m) Cable, 80/case 1/pkg51-7710

MacroLyte® Dispersive Electrodes

Adult Single Dispersive Electrode (for patients >15 kg), Single use,
Pre-attached 10' (3.05m) Cable, 100/case, 25/box.....400-2100

Adult Single Dispersive (for patients >15 kg) No Cable
(Use Reusable Cable T228 - pg. 21) 100/case 50/box 1/pkg.....400-2349

Adult Single Dispersive Electrode (for patients >15 kg), Single use,
without cable, resealable 5-pack pouch (use reusable cable # T229),
100/case, 20/box, 5/pkg400-2700

Pediatric Single Dispersive Electrode (for patients 5-15 kg), Single use,
Pre-attached 10' (3.05m) Cable, 100/case, 25/box.....425-2200

Pediatric Dual Dispersive Electrode (for patients 5-15 kg), Single use,
Pre-attached 10' (3.05m) Cable, 100/case, 25/box425-2508

Premie Single Dispersive Electrode (for patients < 5 kg), Single use,
Pre-attached 10' (3.05m) Cable, 40/case, 10/box440-2400

Infant Single Dispersive Electrode (for patients 5-15 kg), Single use,
Pre-attached 10' (3.05m) Cable, 60/case, 15/box450-2300



SureFit™



ThermoGard®



MacroLyte®



60-8030-001



System 5000™ Electrosurgical Unit (ESU)

The standard in consistent energy delivery, the System 5000 unites proprietary dynamic response technology with an array of specialty modes for desired clinical effect.

System 5000 ESU

System 5000 ESU, 120V	60-8005-001
System 5000 ESU, 100V - 240V (Symbols Front Panel)	60-8005-002
System 5000 ESU, 100V - 240V	60-8005-003

Includes a System 5000 – 120V ESU, Mobile Pedestal, Upper Storage Basket, Lower Storage Basket, Monopolar Footswitch, Bipolar Footswitch (English Front Panel)

60-8005-SYS

Includes a System 5000 – 100V to 240V ESU, Mobile Pedestal, Upper Storage Basket, Lower Storage Basket, Monopolar Footswitch, Bipolar Footswitch (Symbols Front Panel)

60-8015-SYS

Includes a System 5000 – 100V to 240V ESU, Mobile Pedestal, Upper Storage Basket, Lower Storage Basket, Monopolar Footswitch, Bipolar Footswitch (English Front Panel)

60-8018-SYS

Mobile Pedestal

Mobile Pedestal
including Upper and Lower Storage Baskets

60-8040-001

Footswitches

Monopolar Footswitch with 15 ft. cable	60-6700-001
Bipolar Footswitch	60-5103-001

Basket

Saddlebag Lower Basket	60-8041-001
------------------------------	-------------

Stacking Adapter

Adapter allows two System 5000 ESUs to be mounted on a Mobile Pedestal

60-8030-001

Manuals / CD

Operator's Manual, System 5000 ESU	60-8016-ENG
In-Service CD, System 5000 ESU	60-8026-001
In-Service DVD, System 5000 ESU	60-8026-DVD
Service Manual, System 5000 ESU	60-8017-ENG

System 2450™ Electrosurgical Unit (ESU)

The System 2450 provides state-of-the-art innovation in an easy-to-use format. Simple on the outside, yet sophisticated and powerful on the inside.

System 2450 ESU

System 2450 ESU, 100V	60-2450-100
System 2450 ESU, 120V	60-2450-120
System 2450 ESU, 220V	60-2450-220
System 2450 ESU, 230-240V	60-2450-230
System 2450 Cart	60-7152-001

Footswitches

Monopolar Footswitch with 15 ft. cable	60-6700-001
Bipolar Footswitch	60-5103-001

Stacking Adapter

Stacking Adapter for System 2450	60-6963-001
--	-------------

Manuals / CD

Operator's Manual, System 2450 ESU	60-2451-ENG
In-Service CD, System 2450 ESU	60-2453-001
Service Manual, System 2450 ESU	60-2454-ENG

Universal ESU Cart

Assembled Cart	60-5480-001
----------------------	-------------



60-5480-001



GoldLine® Electrosurgical Pencils

CONMED’s wide variety of pencils appeal to a wide variety of surgeon preferences. Electrosurgical pencils are available in Push Button, Rocker Switch, and Foot-Control configurations, as well as with stainless steel and UltraClean electrode options.

Push Button, Hand Switch Pencils

UltraClean® Blade, Holster, 10’ Cable, 40/case	131309A
UltraClean® Blade, Holster, 15’ Cable, 40/case	131326A
Standard Blade, Holster, 10’ Cable, 40/case	130309A
Standard Blade, Holster, 15’ Cable, 40/case	130326A
Standard Blade, Holster, Tip Cleaner, 10’ Cable, 40/case	130303A
Needle Electrode, Holster, 10’ Cable, 40/case.....	130302A
Extended Insulated Blade, Holster, 10’ Cable, 40/case.....	138114A

Rocker Switch, Hand Switch Pencils

UltraClean® Blade, Holster, 10’ Cable, 40/case	131307A
UltraClean® Blade, Holster, 15’ Cable, 40/case	131327A
Standard Blade, Holster, 10’ Cable, 40/case	130307A
Standard Blade, Holster, 15’ Cable, 40/case	130327A
Standard Blade, Holster, Tip Cleaner, 10’ Cable, 40/case	130304A
Needle Electrode, Holster, 10’ Cable, 40/case.....	130301A
Ext. Blade 10’ (3.05m) Cable, Holster 40/case 1/pkg	138115A

Foot Control Pencils

UltraClean® Blade, Holster, 10’ Cable, 40/case	138650A
Needle Electrode, Holster, 10’ Cable, 40/case.....	138652A
Blade Electrode, Holster, 10’ Cable, 40/case.....	138659A

Tip Cleaner

Tip Cleaner, Single Use, Sterile, 40/case	138029
---	--------

MicroNeedles

Compatible an electrosurgical pencils that can accommodate an electrode with a 3/32 inch (2.4mm) or 5/32 inch (4mm) shaft.

3cm, 0° MicroNeedle, 10/case	138505-10
4cm, 0° MicroNeedle, 10/case	138506-10

Reusable Hand Control Pencils

GoldLine® Push Button, 1" Blade Disposable, 50 use, 10' (3.05m) Cable 10/case 1/pkg	130317
GoldLine® Push Button, 1" Blade Disposable, 50 use, 15' (4.57m) Cable 10/case 1/pkg	130317-15
GoldLine® Rocker Switch, 1" Blade Disposable, 50 use, 10' (3.05m) Cable 10/case 1/pkg	130316
PowerPoint®, 1" Blade Reusable, 50 use, 15' (4.57m) Cable 10/case 1/pkg	130384

Reusable Foot Control Pencils

Sold without electrode, 50 use, 10' (3.05m) Cable 1 each.....	60-0815-001
--	-------------

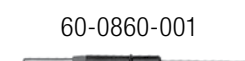
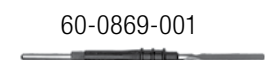
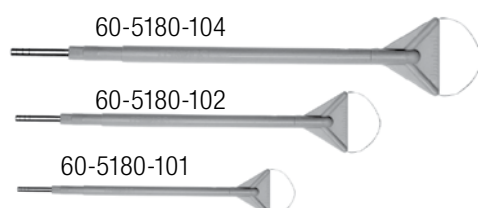
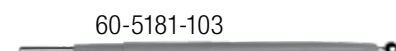
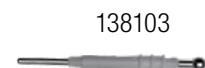
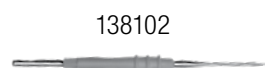
Pencil Accessories

Reusable Safety Holster 10/case 1/pkg	60-0235-001
Disposable Safety Holster 40/case 1/pkg	137668

ValueBlue™ Electrosurgical Pencils

Push-Button Pencil, 1" Stainless Steel Blade, Sterile 10/case 1/pkg	130402
Push-Button Pencil, 1" ValueBlue Coated Electrode, Sterile 10/case 1/pkg	130403
Rocker-Switch Pencil, 1" Stainless Steel, Sterile 10/case 1/pkg	130404
Rocker-Switch Pencil, 1" ValueBlue Coated Electrode, Sterile 10/case 1/pkg	130405





Disposable Stainless Steel Needles

Needle Electrode with Hex Hub	
40/case 1/pkg	138102
Needle Electrode with Extended Insulation; Hex Hub	
40/case 1/pkg	138105
6" Needle Electrode with Hex Hub	
40/case 1/pkg	138108
6" ENT Needle Electrode with Extended Insulation	
40/case 1/pkg	138025

Disposable Stainless Steel Balls

Ball, 3/16" diameter, with Hex Hub	
40/case 1/pkg	138103
Ball, 3mm diameter, 10cm shaft	
5/case 1/pkg	60-5181-102
Ball, 5mm diameter, 10cm shaft	
5/case 1/pkg	60-5181-103

Disposable Loops

Loop Excision Electrode, "T" Style, 12x8mm	
5/case 1/pkg	60-5180-101
Loop Excision Electrode, "T" Style, 15x10mm	
5/case 1/pkg	60-5180-102
Loop Excision Electrode, "T" Style, 20x10mm	
5/case 1/pkg	60-5180-104

Reusable Blades

Straight Blade Electrode, 1" (2.54cm) length; Hex Hub	
6/case 1/pkg	60-0869-001

Reusable Needles

Needle Electrode, Fine; Hex Hub	
6/case 1/pkg	60-0860-001

Reusable Loops and Conization

Round Loop Electrode for cutting and biopsies, 3/8" (0.95cm) diameter, 2" (5.08cm) overall length	
5/case 1/pkg	138010
Round Loop Electrode for cutting and biopsies, 1/4" (0.64cm) diameter, 1 3/4" (4.45cm) overall length	
5/case 1/pkg	138011
Round Loop Electrode for cutting, 3/4" (1.91cm) diameter, 2.1" (5.33cm) overall length	
5/case 1/pkg	138012
Medium 1/4" (.064cm) conization; 1 each	138008

Reusable Extender

Straight Electrode Extender ,5" (12.7cm)
50/case 1/pkg 138026

Disposable UltraClean® Blades

1" UltraClean® Blade
50/case 1/pkg 139100

1" UltraClean® Blade with Extended Insulation
50/case 1/pkg 139104EXT

4" UltraClean® Blade
50/case 1/pkg 139112

4" UltraClean® Blade with Extended Insulation
50/case 1/pkg 139112EXT

6" UltraClean® Blade
50/case 1/pkg 139107

6" UltraClean® Blade with Extended Insulation
50/case 1/pkg 139110EXT

1" UltraClean® Blade for ABC® Triple Option Handpiece
10/case 1/pkg 139321

Disposable Stainless Steel Blades

Heavy Flat Blade Electrode with Hex Hub
40/case 1/pkg 138100

Standard Flat Blade Electrode with Hex Hub
40/case 1/pkg 138101

Flat Blade Electrode with Extended Insulation; Hex Hub
40/case 1/pkg 138104

6" Flat Blade Electrode with Hex Hub
40/case 1/pkg 138107

6" Flat Blade Electrode with Extended Insulation; Hex Hub
40/case 1/pkg 138110

4" Flat Blade Electrode with Hex Hub
40/case 1/pkg 138112

3 1/2" Flat Blade Electrode with Hex Hub
40/case 1/pkg 138113

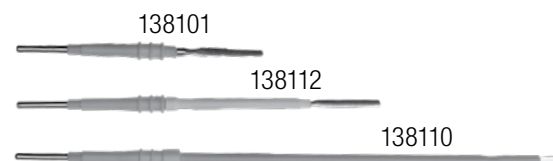
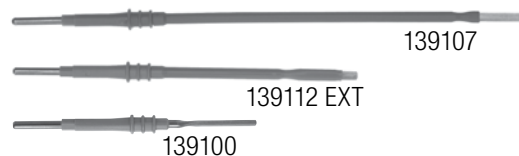
Disposable UltraClean® Needles

1" UltraClean® Needle
50/case 1/pkg 139102

1" UltraClean® Needle with Extended Insulation
50/case 1/pkg 139105EXT

6" UltraClean® Needle
50/case 1/pkg 139108

6" UltraClean® Needle with Extended Insulation
50/case 1/pkg 139025EXT





60-0136-001



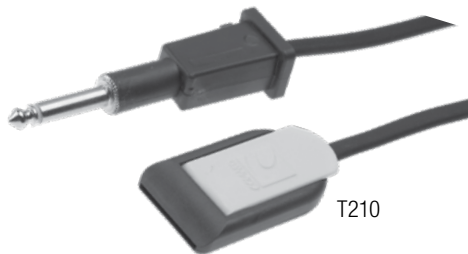
60-0137-001



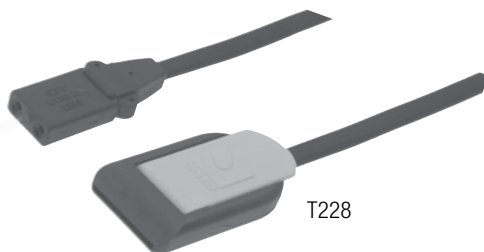
60-5806-001



60-0641-001



T210



T228



T235

Reusable Dispersive Electrodes

Adult Reusable Patient Plate; Stainless Steel, 63 sq. in. (406.48 sq. cm)
1 each60-0136-001

Pediatric Reusable Patient Plate; Stainless Steel, 35 sq. in. (225.82 sq. cm)
1 each60-0136-002

Reusable Cables (for use with reusable dispersive electrodes)

2-wire cable for 60-0136-001 and 60-0136-002 patient plates above.
For use with Aspen, Neomed, BARD EMS 771, 737 and 737XL and Ritter
Electrosurgical Units; 10' (3.05m) Cable
1 each60-0137-001

2-wire cable for 60-0136-001 and 60-0136-002 patient plates above.
For use with CONMED Sabre® 180, Sabre® 2400, Excalibur, Excalibur
Plus, Excalibur Plus PC®, System 2450™ and System 5000™
Electrosurgical Units; 10' (3.05m) Cable
1 each60-5806-001

Conductive Gel (for use with reusable dispersive electrodes)

ASPENGEL Conductive Gel, Nonstaining; 8.45 fluid ounce
12/case 1/pkg60-0641-001

Cables for Dispersive Electrodes

Cable for use with Erbe and Elmed generators; 10' (3.05m)
1 each T210

Cable for use with all ARM-equipped and Valleylab REM-equipped
generators. Enables pad-to-patient contact quality monitoring;
10' (3.05m)
1 each T229

Cable for use with all ARM-equipped and Valleylab REM-equipped
generators. Enables pad-to-patient contact quality monitoring;
15' (4.57m)
1 each T229-5M

Cable for use with single dispersive electrodes and non-contact quality
monitoring generators; 10' (3.05m)
1 each T228

Cable for use with CONMED System 6500 and System 7500® ABC®
10' (3.05m)
1 each T235

Cable for use with all ARM-equipped and Valleylab REM-equipped
generators. Use with the System 6400. Enables pad-to-patient contact
quality monitoring; 10' (3.05m)
1 each T238

Dispersive Electrode Adapters and Cables

Dispersive Electrode Adapter. For use with Valleylab generators without REM (single-foil only); Wallach Leep 100	
1 each.....	B204
Dispersive Electrode Adapter. For use with all Aspen Labs; Birtcher 3000, 4400; Davol/Bard/Birtcher 5000 without PSS; Bicap 60, 200	
1 each.....	B205
Dispersive Electrode Adapter. For use with Erbe and Elmed generators	
1 each.....	B210
Dispersive Electrode Adapter. Allows CONMED ABC generators to use Valleylab dual-foil dispersive electrodes	
1 each.....	A238
Dispersive Electrode Adapter. For use with Ritter Bovie Specialist	
1 each.....	B227
Dispersive Electrode Adapter. For use with Olympus S-P cables retrofit with CONMED Adapter and CONMED Single Foil Dispersive electrodes	
1 each.....	B260



A238



B227



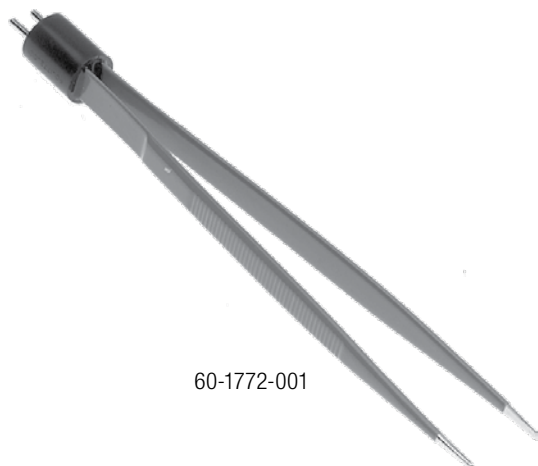
B260



60-1765-001



136011



60-1772-001

Suction Coagulators

CONMED's Suction Coagulators provide a means of aspirating blood and small tissue particulate in addition to controlling bleeding during open surgical procedures.

Suction Coagulator, Foot Control, 10 French, 6" (15cm), Monopolar, Single Use; Sterile 10' (3.0m) Cordset,
25/case..... 130187

Suction Coagulator, Hand Control, 10 French, 6" (15cm), Monopolar, Single Use; Sterile 10' (3.0m) Cordset,
25/case..... 130188

Electrosurgical Forceps and Accessory Cables

CONMED's bipolar and monopolar forceps are available in a multitude of lengths, tip sizes, and designs including Bayonet, Jewelers, Adson and Straight. Bipolar and monopolar options. Foot control and hand control activation.

Foot Control Bipolar Forceps: Bayonet Reusable; Non-Sterile

Scoville-Greenwood Bayonet, 7¾" (19.7cm) Length,
1.5mm Tip, Insulated.....60-1765-001

Cushing Bayonet, Micro Tip, 7½" (19.1cm) Length,
0.7mm Tip, Insulated.....60-1769-001

Hardy Bayonet, Micro Tip with Stops, 8¼" (21.0cm) Length,
0.5mm Tip, Non-Insulated60-1770-001

Bayonet, Straight 20cm Length,
2.0mm Tip, Insulated.....60-7400-001

Bayonet, Straight, 20cm Length,
1.0mm Tip, Insulated..... 60-7401-001

Foot Control Bipolar Forceps — Jewelers Reusable; Non-Sterile

Jewelers Micro Tip, Curved, 4" (10.2cm) Length,
0.4mm Tip, Insulated.....60-1766-001

Jewelers Micro Tip, Straight, 4" (10.2cm) Length,
0.4mm Tip, Insulated..... 60-1767-001

Jewelers Micro Tip, Curved, 4" (10.2cm),
0.4mm Tip, Non-Insulated 136011

Jewelers, Straight, 11cm Length,
0.5mm Tip, Insulated.....60-7403-001

Foot Control Bipolar Forceps — Semkin Reusable; Non-Sterile

Semkin, Micro Tip with Stops, 5½" (14.0cm) Length,
0.7mm Tip, Non-Insulated60-1771-001

Semkin, Straight, 6" (15.2cm) Length,
1.5mm Tip, Insulated.....60-1772-001

Foot Control Bipolar Forceps — Adson Reusable; Non-Sterile

Adson, Straight, 5" (12.7cm) Length,
1.0mm Tip, Insulated60-1768-001

Adson, Straight, 13cm Length,
1.0mm Tip, Insulated.....60-7404-001

Foot Control Bipolar Forceps — Iris Reusable; Non-Sterile

Iris, Straight, 3½" (8.9cm) Length,
0.4mm Tip, Insulated.....60-1773-001

Iris, Curved, 3½" (8.9cm) Length,
0.5mm Tip, Insulated.....60-1774-001

Foot Control Bipolar Forceps — Straight Reusable; Non-Sterile

Cushing, Straight, 7" (17.8cm) Length,
1.5mm Tip, Not Insulated 136016

Hand Control Bipolar Forceps — Reusable; Non-Sterile

Cushing Bayonet, 7½" (19.1cm) Length,
0.7mm Tip, Insulated.....60-5120-001

Scoville-Greenwood Bayonet, 7¾" (19.7cm) Length,
1.5mm Tip, Insulated.....60-5121-001

Jewelers, Straight Tip 4" (10.2cm) Length,
0.4mm Tip, Insulated.....60-5122-001

Semkin, Micro Tip, 5½" (14.0cm) Length,
0.7mm Tip, Insulated.....60-5123-001

Foot Control Monopolar Forceps — Reusable; Non-Sterile

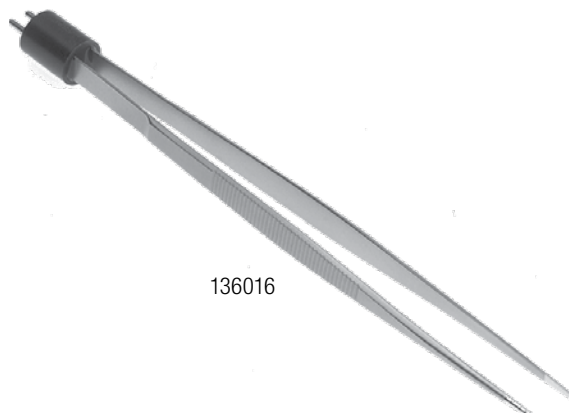
Potts-Smith, Straight Tip with Cable, 7" (17.8cm) Length,
2.0mm Tip, Insulated.....60-0821-001

Hand Control Monopolar Forceps — Reusable; Non-Sterile

Bayonet, Straight Tip with Cable, 7½" (19.1cm),
2.0mm Tip, Insulated.....60-0812-001



60-1774-001



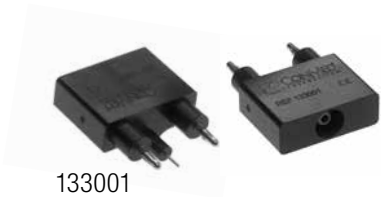
136016



60-0823-001



60-6790-001



133001



133002

Active Instrument Adapter – Monopolar

- Adapter for foot control monopolar accessories;
fits Bovie #12 type output sockets
1 each..... 60-0823-001
- Universal Adapter for foot control monopolar accessories;
fits Bovie #12 type output sockets
1 each..... 60-6790-001

Active Instrument Adapter – Bipolar

- Coaxial Bipolar Adapter, for use with CONMED Excalibur Plus PC®,
Sabre® 2400, Sabre® 180, System 7500® and 7550™
1 each..... 133001
- Coaxial Bipolar Adapter, for use with CONMED System 2450™,
System 5000™, and Valleylab electrosurgical units
1 each..... 133002

Disposable Cords

.09375" Disposable Monopolar Cord (Gray) 60-5168-001
 .09375" (2.4mm) receptacle, 10' (3.05m) length
 Single-use, Sterile, 1/pkg, 50/cs
 For use with laparoscopy electrodes
 series 60-5158-XXX thru 60-5165-XXX.

4mm Disposable Monopolar Cord (Blue) 60-5168-005
 4mm (.15625") receptacle, 10' (3.05m) length
 Single-use, Sterile, 1/pkg, 50/cs
 Fits most standard 4mm monopolar connector posts.
 Fits all CONMED disposable scissors, graspers, dissectors,
 DetachaTip®, Sensatec® and 4mm post laparoscopic electrodes.

Disposable Bipolar Cord, 10' (3.05m) length 60-5102-002
 Single-use, Sterile, 1/pkg, 10/cs

Disposable Bipolar Cord, 12' (3.66m) length 135166
 Single-use, Sterile, 1/pkg, 40/cs

Reusable Cables

4mm Reusable Monopolar Cable..... 60-5169-001
 4mm (.15625") pin receptacle, 10' (3.05m) length
 Reusable, Non-sterile, 1 each

Fits most standard 4mm monopolar connector posts.
 Fits all CONMED disposable scissors, graspers, dissectors,
 DetachaTip®, Sensatec® and 4mm post style laparoscopic electrodes.

Footswitch Adapter

Standard adapter for foot-activated monopolar accessories.... 60-0823-001
 1 each
 Fits Bovie #12 type output sockets.



60-5168-001



60-5168-005



60-5102-002



135166



60-5169-001



60-0823-001



Spatula



"L" Hook



Straight Blade



"J" Hook



Hook Blade

Disposable Laparoscopic Electrodes

Spatula, 5mm x 32cm working length, 1/pkg, 5/cs60-5159-001

Spatula, 5mm x 27cm working length, 1/pkg, 5/cs 60-5159-002

Spatula, 5mm x 32cm working length with 4mm pin, 1/pkg, 5/cs..... 60-5159-004

Packaged with the CONMED® 60-5168-005
single-use 4mm footswitching cable.

"L" Hook, 5mm x 32cm working length, 1/pkg, 5/cs 60-5163-001

"L" Hook, 5mm x 27cm working length, 1/pkg, 5/cs 60-5163-002

"L" Hook, 5mm x 32cm working length
with 4mm pin, 1/pkg, 5/cs..... 60-5163-004

Packaged with CONMED® 60-5168-005
single-use 4mm footswitching cable.

Straight Blade, 5mm x 32cm working length, 1/pkg, 5/cs... 60-5160-001

Straight Blade, 5mm x 27cm working length, 1/pkg, 5/cs... 60-5160-002

Packaged with the CONMED® 60-5168-005
single-use 4mm footswitching cable.

"J" Hook, 5mm x 32cm working length, 1/pkg, 5/cs..... 60-5164-001

"J" Hook, 5mm x 27cm working length, 1/pkg, 5/cs..... 60-5164-002

"J" Hook 5mm x 32cm working length
with 4mm pin, 1/pkg, 5/cs..... 60-5164-004

Packaged with the CONMED® 60-5168-005
single-use 4mm footswitching cable.

Hook Blade, 5mm x 32cm working length, 1/pkg, 5/cs..... 60-5162-001

Accessory Cables

Disposable Footswitching Bipolar Cable, 10' (3.05m)

Fixed plug for use with most standard generators60-6102-002

Reusable, Footswitching, Bipolar Forceps Cable, use with most
standardized generators, 12' (3.66m).....60-8046-001

Disposable Monopolar TUR/Endoscopic Cable for ACMI,
10' (3.05m).....60-2121-001

Reusable, Handswitching, Bipolar Cable, use with Bistat™ and System
7550, 12' (3.66m)60-5130-001

Reusable, Handswitching, Bipolar Cable, use with System 2450 and
System 5000, 12' (3.66m)60-5132-001

Reusable, Footswitching, Monopolar Forceps Cable with threaded male
connector, 10' (3.05m).....60-0824-001

Reusable Footswitching Bipolar Forceps Cable, 10' (3.05m) use with Wolf
Kleppinger forceps Twin banana plug machine connectors..... QI-2301

Reusable Monopolar TUR Cable
with Standard (Bovie #12) Plug60-0816-001

INSTRUMENTS





LAPVUE10



VUETIP10

LaproVue Visibility System

The LaproVue Visibility System is an all-in-one solution designed to take the complexity out of achieving optimal visibility. An easy to use, disposable device that warms, white balances, clean and defogs laparoscopes.

LaproVue Visibility System, 10/box	LAPVUE10
VueTip Trocar Swab Accessory Kit, 10/box	VUETIP10

DetachaTip III Laparoscopic Instruments

Complimentary balance in a reusable handheld instrument system. Combines precise, reliable, and comfortable performance with dramatically reduced procedural costs. Only DetachaTip III offers the optimal blend of performance and cost efficiency.

DetachaTip III Scissors

Curved Metzenbaum, 33cm x 5mm.....	3-1003
Curved Metzenbaum, 43cm x 5mm.....	3-4301
Curved Mini-Metzenbaum, 33cm x 5mm.....	3-1004
Curved Mini-Metzenbaum, 43cm x 5mm.....	3-4304

DetachaTip III Graspers

Straight Fenestrated Grasper, 33cm x 5mm	3-1008
Straight Fenestrated Grasper, 43cm x 5mm	3-4307
Endoweave™ Grasper, 33cm x 5mm	3-1028
Endoweave™ Grasper, 43cm x 5mm	3-4328
Allis Grasper, 33cm x 5mm.....	3-1019
Allis Grasper, 43cm x 5mm.....	3-4319
5mm Babcock Grasper, 33cm x 5mm.....	3-1005
5mm Babcock Grasper, 43cm x 5mm.....	3-4305
Long Fenestrated Grasper, 33cm x 5mm	3-1006
Long Fenestrated Grasper, 43cm x 5mm	3-4306
Claw Grasper, 33cm x 5mm.....	3-1011
Claw Grasper, 43cm x 5mm.....	3-4311

DetachaTip III Dissectors

Maryland (Curved) Dissector, 33cm x 5mm.....	3-1009
Maryland (Curved) Dissector, 43cm x 5mm.....	3-4308
Meeker (Right Angle) Dissector, 33cm x 5mm	3-1017
Meeker (Right Angle) Dissector, 43cm x 5mm	3-4317
Tapered (Dolphin) Dissector, 33cm x 5mm	3-1018
Tapered (Dolphin) Dissector, 43cm x 5mm	3-4318
Blunt Nose Dissector, 33cm x 5mm.....	3-1012
Blunt Nose Dissector, 43cm x 5mm.....	3-4312



Curved
Metzenbaum
Scissor
3-1003
3-4301



Curved Mini-
Metzenbaum
Scissor
3-1004
3-4304



Straight
Fenestrated
Grasper
3-1008
3-4307



Endoweave
Grasper
3-1028
3-4328



Allis
Grasper
3-1019
3-4319



Babcock
Grasper
3-1005
3-4305



Long Fenestrated
Grasper
3-1006
3-4306



Claw
Grasper
3-1011
3-4311



Maryland
(Curved)
Dissector
3-1009
3-4308



Meeker
(Right Angle)
Dissector
3-1017
3-4317



Tapered
(Dolphin)
Dissector
3-1018
3-4318



Blunt
Nose
Dissector
3-1012
3-4312



DetachaTip III Multi-Use Handles

Universal Standard Handle with ratchet, Non-Sterile, 1/box..... 3-1010
DetachaTip Luer Port Cap..... CD203



Multi-Use Instrument Trays

DetachaTip Tray 3-4329
For 33cm and 43cm DetachaTip® instruments Only, Non-sterile, 1 each
DetachaTip PLUS Tray 3-4343
Accommodates 43cm and 33cm instruments and accessories.
Non-sterile, 1 each

DetachaTip II Multi-Use Scissors

Curved Metzenbaum, 5mm x 33cm length, Sterile, 1/box	2-1003
Curved Metzenbaum, 5mm x 43cm length, Sterile, 1/box	2-4301
Curved Mini-Metzenbaum, 5mm x 33cm length, Sterile, 1/box	2-1004
Curved Mini-Metzenbaum, 5mm x 43cm length, Sterile, 1/box	2-4304
Scissor Hook, 5mm x 33cm length, Sterile, 1/box.....	2-1013

DetachaTip II Multi-Use Graspers

Fenestrated (Duckbill), 5mm x 33cm length, Sterile, 1/box	2-1008
Fenestrated (Duckbill), 5mm x 43cm length, Sterile, 1/box	2-4307
Allis, 5mm x 33cm length, Sterile, 1/box	2-1019
Allis, 5mm x 43cm length, Sterile, 1/box	2-4319
Endoweave™, 5mm x 33cm length, Sterile, 1/box	2-1028
Endoweave™, 5mm x 43cm length, Sterile, 1/box	2-4328
Babcock, 5mm x 33cm length, Sterile, 1/box	2-1005
Babcock, 5mm x 43cm length, Sterile, 1/box	2-4305
Babcock, 10mm x 33cm length, Sterile, 1/box	2-1014

DetachaTip II Multi-Use Dissectors

Curved (Maryland), 5mm x 33cm length, Sterile, 1/box	2-1009
Tapered, 5mm x 33cm length, Sterile, 1/box	2-1018
Tapered, 5mm x 43cm length, Sterile, 1/box	2-4318
Meeker (Right Angle), 5mm x 33cm length, Sterile, 1/box	2-1017

DetachaTip II Multi-Use Handles

Standard Handle with ratchet, Non-Sterile, 1/box	1-1010
DetachaTip Luer Port Cap	CD203

Multi-Use Instrument Tray

Three-part Sterilization Tray for DetachaTip instruments.....	1-1027
Non-sterile, 1 each, for 33cm DetachaTip instruments	



Fenestrated
(Duckbill)
2-1008, 2-4307



Allis
2-1019, 2-4319



Endoweave™
2-1028, 2-4328



Babcock (10mm)
Babcock (5mm)
2,1005, 2-4305, 2-1014



Curved (Maryland)
2-1009, 2-4308



Tapered (Dolphin)
2-1018, 2-4318



Meeker
2-1017



Standard
1-1010



1-1027



Curved Metzenbaum
60-6035-001, 60-6035-431



Curved Metzenbaum
Narrow Tip
60-6035-001W



Mini Curved Metzenbaum
60-6035-003



Straight
60-6035-002



Mini Straight
60-6035-005



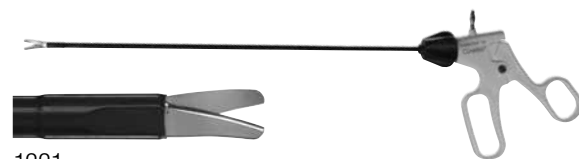
Hook Blade
60-6035-004



1411



1412



1221



1222

CONMED Disposable Laparoscopic Scissors

- Wide opening scissors for improved dissection
- Extended insulation for maximum protection
- All instruments are packaged sterile
- Monopolar
- Disposable electrosurgical cord included
- Red rotation knob to indicate Scissor family
- 5 year shelf life

CONMED Curved Metzenbaum 60-6035-001
5mm x 32cm length with universal cord, 1/pkg, 5/cs

CONMED Curved Metzenbaum, Narrow Tip 60-6035-001W
5mm x 32cm length with universal cord, 1/pkg, 5/cs

CONMED Curved Metzenbaum 60-6035-431
5mm x 43cm length with universal cord, 1/pkg, 5/cs

CONMED Mini Curved Metzenbaum 60-6035-003
5mm x 32cm length with universal cord, 1/pkg, 5/cs

CONMED Straight 60-6035-002
5mm x 32cm length with universal cord, 1/pkg, 5/cs

CONMED Mini Straight 60-6035-005
5mm x 32cm length with universal cord, 1/pkg, 5/cs

CONMED Hook Blade 60-6035-004
5mm x 32cm length with universal cord, 1/pkg, 5/cs

Reflex® Laparoscopic Disposable Scissors

Reflex Short Curved Scissors 1411
5mm x 32cm length, (cord not included), 1/pkg, 6/cs

Reflex Long Curved Scissors 1412
5mm x 32cm length, (cord not included), 1/pkg, 6/cs

CONMED Disposable Scissors

Short Curved Mini Metz 1221
5mm x 33cm length, (cord not included), 1/pkg, 10/cs

Long Curved Metz Scissors 1222
5mm x 33cm length, (cord not included), 1/pkg, 10/cs

VCare Plus

VCare Plus helps surgeons deliver superior control of the anatomy, effective uterine manipulation and identification of key surgical landmarks for a safe, efficient and repeatable procedure.

VCare Plus, Small (32mm)	
Cervical Cup, 8/cs	60-6085-200A
VCare Plus, Medium (34mm)	
Cervical Cup, 8/cs	60-6085-201A
VCare Plus, Large (37mm)	
Cervical Cup, 8/cs	60-6085-202A
VCare Plus, X-Large (40mm)	
Cervical Cup, 8/cs	60-6085-203A

VCare DX Plus

Provides excellent control of the uterus without distention of vaginal fornices. Ideal for:

- Tubal Ligation
- Myomectomies
- Diagnostic Laparoscopy
- Treatment of Endometriosis

VCare DX Plus Manipulator, 8/cs	60-6080-000A
---------------------------------------	--------------



VCare Plus



VCare DX Plus

Core Suction / Irrigation

Suction Probes (Reusable)

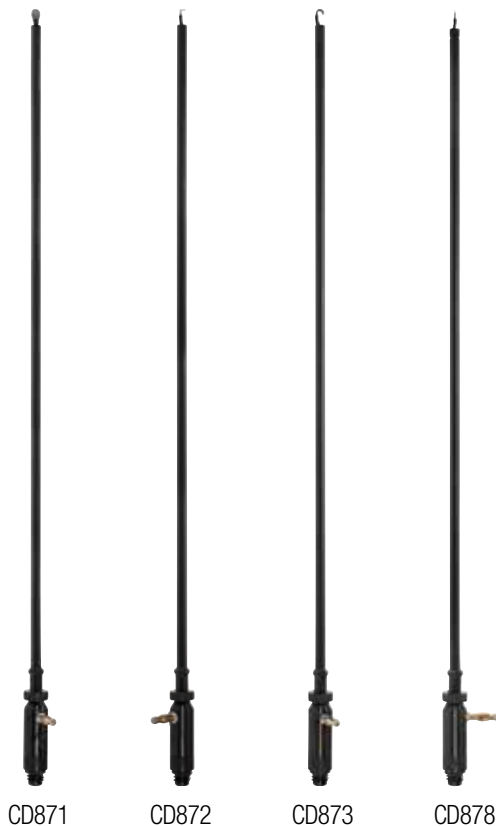
10mm x 32cm with Holes.....	CD856
10mm x 32cm Poole.....	CD861
5mm x 32cm with Holes.....	CD860
5mm x 32cm Poole Suction.....	CD859
5mm x 45cm with Holes.....	CD849
3mm x 32cm with Holes (MicroLap®).....	CD845
3mm Laser Fiber Adapter	CD852



Core Suction / Irrigation

Optional Electrodes (Reusable with integrated suction probe)

5mm x 32cm Spatula	CD871
5mm x 32cm L-Hook	CD872
5mm x 32cm J-Hook	CD873
5mm x 32cm Needle	CD878
5mm x 32cm Electrode Probe Sheath.....	CD874



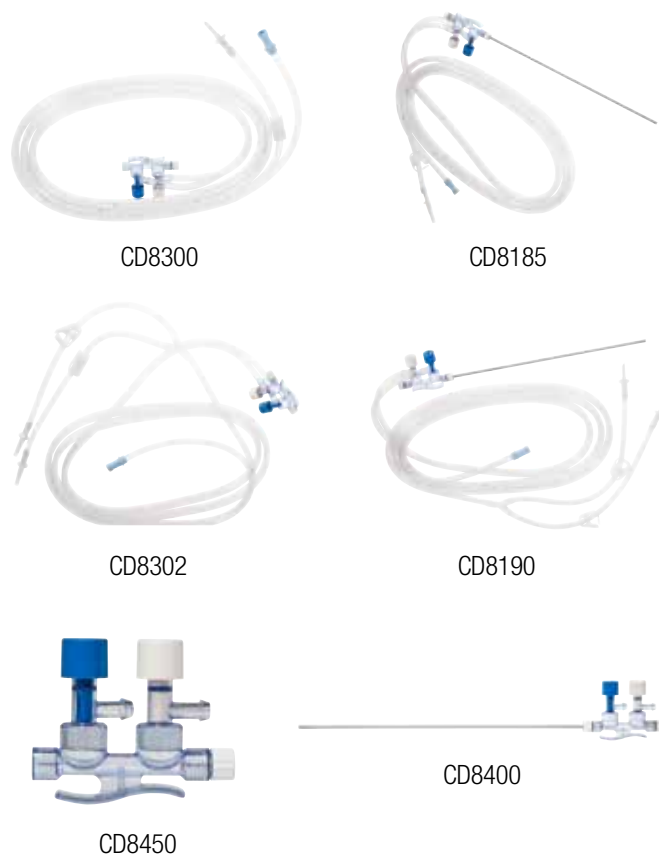
Core™ Suction / Irrigation System

The Core Fluid Management System offers the benefit of a simple, easy to use suction and irrigation system with the convenience of a reusable suction cannula for added savings.

1. Select a Trumpet
2. Select a Suction Probe
3. Select an optional Electrode

Trumpet Styles (Disposable)

Single bag, 10/box	CD8300
Single bag, 5mm, 32cm probe, 10/box	CD8185
Dual or Single bag, 10/box	CD8302
Dual or Single bag, 5mm, 32cm probe, 10/box	CD8190
Handpiece only, 20/box	CD8450
Handpiece with 5mm, 32cm probe, 20/box	CD8400





Pistol Grip



Straight Handle



Universal Plus® System

Electrosurgical and high volume suction/irrigation systems for laparoscopic surgery.

- Cut
- High Volume Suction
- Caulterize
- High Volume Irrigation
- Dissect
- Specimen Retrieval
- Laser
- Smoke Evacuation

Pistol Grip

- Pistol Grip, Foot Control E/S, Hand Control S/I, w/10' HiFlo tubing, irrig. bag spike and universal cord, 10/cs 60-6010-000
- Pistol Grip, Hand Control E/S and S/I, w/10' HiFlo tubing, irrig. bag spike, 10/cs 60-6010-002
- Pistol Grip, Hand Control S/I, w/10' HiFlo Tubing, irrig. "Y" Connector for dual or single bags, bag spike, 10/cs 60-6020-100

Straight Handle

- Straight Handle, Foot Control E/S and S/I, w/10' HiFlo tubing, irrig. bag spike and universal cord, 10/cs 60-6010-001
- Straight Handle, Hand Control E/S (Buttons) and S/I, w/10' HiFlo tubing and irrig. bag spike, 10/cs 60-6010-003
- Straight Handle, Hand Control E/S (Rocker switch) and S/I, w/10' HiFlo tubing and irrig. bag spike, 10/cs 60-6010-005
- Straight Handle, Hand Control S/I, w/10' HiFlo Tubing, irrig. "Y" Connector for dual or single bag, bag spike, 10/cs 60-6020-115

**5mm Electrosurgery Electrodes with Suction/Irrigation
Optional Stealth ER Eschar Resistant Coating**

- Spatula
 - 27cm 60-5272-027
 - 32cm 60-5272-032
- Spatula with non-stick coating
 - 27cm 60-5274-027
 - 32cm 60-5274-032
 - 44cm 60-5274-044
- L-Hook
 - 27cm 60-5272-127
 - 32cm 60-5272-132
- L-Hook with non-stick coating
 - 27cm 60-5274-127
 - 32cm 60-5274-132
 - 44cm 60-5274-144

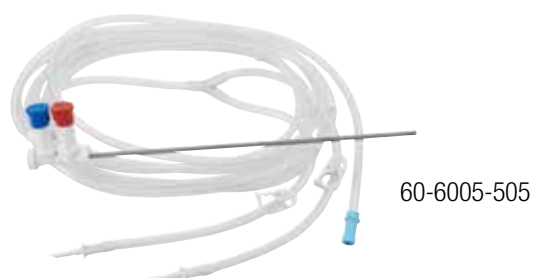
FloVac®

FloVac offers outstanding value as a system designed especially for suction and irrigation when electrosurgery is not required. Choose from two styles of control handles - one that accepts our wide range of removable cannula or one with a pre-attached 5mm sump cannula.

For use with Universal Plus®, Universal S/I®, PowerFlo™, and FloVac Control Handles.

FloVac with Universal Connector,
Dual or Single bag 10/cs60-6005-500

FloVac with 5mm x 32cm Cannula,
Dual or Single bag60-6005-505



5mm Electrosurgery Electrodes with Suction/Irrigation Optional Stealth ER Eschar Resistant Coating

J-Hook
27cm60-5272-227
32cm60-5272-232

J-Hook with non-stick coating
27cm60-5274-227
32cm60-5274-232
44cm60-5274-244

Needle
27cm60-5272-927
32cm60-5272-932

Needle with non-stick coating
32cm.....60-5274-932
44cm.....60-5274-944



Interchangeable Reusable Stainless Steel Suction/Irrigation Cannulas

10/10mm Sump Cannula
with side holes, 32cm.....60-6002-301

5/5mm Sump Cannula
with side holes, 32cm.....60-6002-302

5/5mm Stainless Steel Cannula
44cm60-6002-309

10/10mm Stainless Steel Cannula
44cm60-6002-308



Interchangeable Disposable Suction/Irrigation Cannulas – Single Use

10/10mm Sump Cannula
with side holes 32cm60-6001-110

10/10mm “Soft-Tip” Sump Cannula
with side holes, 32cm.....60-6000-130

5/5mm Sump Cannula
with side holes 32cm60-6001-203
with side holes, 44cm.....60-6001-205





Pressure Infuser Irrigation Pumps

- A full line of single 1-liter and 3-liter systems to meet all of your laparoscopic irrigation pressure source needs.
- 1-Liter Pressure Infuser Irrigation Pump
Takes standard irrigation bag, 500 – 1000ml..... 270178
 - Dual 1-Liter Pressure Infuser Irrigation Pump
Takes two bags, 500 – 1000ml,
great for irrigators with dual spikes..... 270123
 - 3-Liter Pressure Infuser Irrigation Pump
Most versatile, takes single bag, 500 – 3000ml
Also can take 2 bags, 500 – 1000ml 270165
 - Power Pack, Infuser Pump Compressor
AC powered air compressor for 270178, 270123,
and 270165 Infuser Irrigation Pumps 270179



Gas Source Quick Connect Couplers

- Ohmeda
Air CD984A
- Puritan-Bennett
Oxygen..... CD989

Reflex® ELC530 Disposable Laparoscopic Clip Applier

Maximum Visibility

20% greater angle allowing maximum visibility for precise clip placement

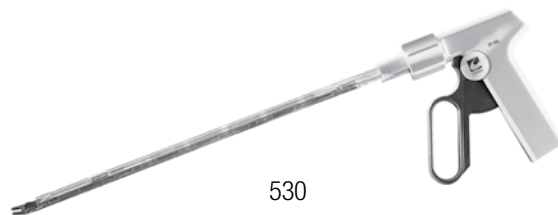
Maximum Control

Automatic, direct drive clip feeding system with audible feedback mechanism indicating complete clip closure

Tissue Lock™ Clip

- Opposing male/female interlocking features
- Provides superior on-vessel clip retention and improved hemostasis

10mm, 20 M/L Clips, 6/cs 530



530

Reflex® One Skin Staplers

- Flexibility of movement
- Fully retracting anvil permits staple release while moving forward or backward unlike competitive models which require you to “back off” before moving forward
- Reflex One releases staple when the handle is fully depressed. Complete staple formation is confirmed by audible and tactile feedback.

35 Wide, 6/box 8535

35 Wide, 50/box 853590

35 Regular, 6/box 8035

INTL 35 Wide, 6/case 3036

INTL 35 Regular, 6/case 3036R



Reflex One Skin Stapler

Reflex® TL Tissue Lift Skin Stapler

- Additional control
- Reflex TL incorporates a semi-retracting anvil that only releases a staple when the handle is fully released
- Semi-retracting anvil gives the TL its “Tissue Lift” which assists in approximating the incision for easier placement of the next staple

35 Wide, 6/box 8735

35 Wide, 50/box 873590

35 Regular, 6/box 8635

INTL 35 Wide, 6/case 3013

INTL 35 Regular, 6/case 3013R



Reflex TL Tissue Lift Skin Stapler

Reflex® Extractor

- Ergonomically designed to help reduce patient discomfort

Wide / Regular, 12/box 3031



Reflex Extractor

Reflex® RHS Re-Loadable Rotating Head Skin Stapler

One (1) each single-use handle and cartridge

- Re-loadable within single patient use

Wide, Sterile, 1/pkg, 6/cs 8935

Anchor Tissue Retrieval System

- Intuitive design provides ease of use
- Opens automatically when deployed
- Rip-stop nylon for exceptional strength and quality



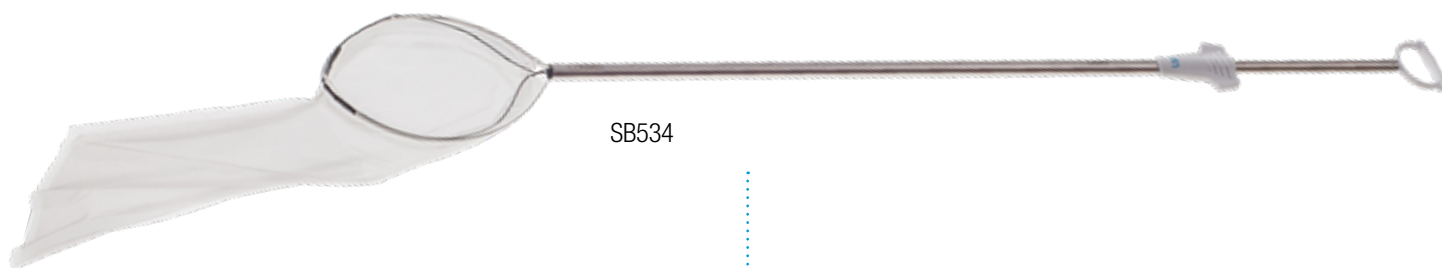
Introducer/Trocar Size	Mouth Diameter	Bag Length	Volume	Qty	Catalog Number
8mm	2.0in (5.1cm)	5.5in (14.0cm)	125ml	5/cs	TRS-ROBO-8
10mm	2.2in (5.6cm)	5.5in (14.0cm)	235ml	5/cs	TRS100SB2
12mm	3.0in (7.6cm)	5.5in (14.0cm)	300ml	5/cs	TRS-ROBO-12
15mm	5.5in (14.1cm)	9.9in (25.4cm)	1550ml	3/cs	TRS-VATS-15
15mm	5.5in (14.1cm)	9.9in (25.4cm)	1550ml	3/cs	TRS175SB2
15mm	6.0in (15.2cm)	10.4in (26.5cm)	1850ml	3/cs	TRS190SB2
25mm	6.5in (16.5cm)	15.0in (38.1cm)	4000ml	3/cs	TRS-TV-25

Bag Alone

Introducer/Trocar Size	Mouth Diameter	Bag Length	Volume	Qty	Catalog Number
10mm	2.2in (5.6cm)	5.5in (14.0cm)	175ml	10/cs	TRS070
10mm	3.5in (8.9cm)	5.5in (14.0cm)	250ml	10/cs	TRS080
15mm	5.5in (14.1cm)	9.9in (25.4cm)	1200ml	5/cs	TRS090

Disposable Laparoscopic Specimen Bags

Sterile, disposable device designed for use as a receptacle for the collection and extraction of tissue, organs, and calculi during laparoscopic surgical procedures. Consists of a flexible memory wire specimen bag and introducer. Use through a 5, 10, or 12mm cannula.



SB534

Description	Cannula	Diameter	Bag Length	Volume	Qty	Catalog Number
Attached Memory Wire Bag, Polymer	5mm	3in (7.62cm)	4in (10.2cm)	120ml	10/case	SB534
Independent Memory Wire Bag, Polymer	10mm	3in (7.62cm)	6in (15.24cm)	255ml	10/case	SB836
Independent Memory Wire Bag, Polymer	10mm	5in (12.7cm)	7in (17.78cm)	680ml	10/case	SB857
Attached Memory Wire Bag, Polymer	10mm	3in (7.62cm)	6in (15.24cm)	255ml	5/case	SB936
Attached Memory Wire Bag, Polymer	10mm	5in (12.7cm)	7in (17.78cm)	680ml	5/case	SB957
Attached Memory Wire Bag, Polymer	12mm	7.5in (19.1cm)	9in (22.9cm)	1500ml	5/case	SB979
Attached Memory Wire Bag, Nylon	10mm	3in (7.62cm)	6in (15.24cm)	255ml	5/case	SB1036
Attached Memory Wire Bag, Nylon	10mm	5in (12.7cm)	7in (17.78cm)	680ml	5/case	SB1057
Attached Memory Wire Bag, Nylon	12mm	7.5in (19.1cm)	9in (22.9cm)	1500ml	5/case	SB1079



Veress Needle

Retracts as the needle is pushed through the abdominal tissue and automatically advances forward once the peritoneum is penetrated. Visual needle position indicator. Clear, comfort handle for easy hang drop test, and a luer lock connector for insufflating the abdominal cavity.

- Pneumoperitoneum Insufflation Needle
14 gauge, 12cm with stainless steel tip guard and band indicator
10/case.....60-6050-001
- Pneumoperitoneum Insufflation Needle 1
4 gauge, 15cm, with stainless steel tip guard and band indicator
10/case.....60-6050-002



Puncture Closure Device (Trocars Wound Closure)

Allows full closure of peritoneum and fascial layers through the trocar. Exchangeable through trocar cannula for easy port closure while maintaining pneumoperitoneum. J-shaped suture placement needle minimizes risk of organ and tissue injuries. Accommodates both braided and monofilament absorbable sutures, up to size 1.

- 10mm, single-use, sterile,
Cannula 10-12mm, 10/case.....PCD-10



Kittner Blunt Dissectors

Convenient, cost-effective packaging houses sponge and blunt tip probes. Non-absorbant radiopaque tip. 40cm length.

- Single tip Kittner, 5mm x 40cm, single use, sterile
5/case CD801
- Dual tip Kittner, 5mm x 40cm, single-use, sterile
5/case..... CD802

Aspiration Needle

- Aspiration Injection Needle, 5mm x 40cm, 16GA
5/case CD950

Anti-Fog Kit

Water-based solution reduces fogging of scopes. Includes adhesive backed sponge with radiopaque ribbon.

- 6cc anti-fog solution vial, sponge single-use, sterile
20/case..... CD004



SMOKE MANAGEMENT





EZLink®
(sold separately; catalog #: EZLINK01)



Pneumatic Footswitch
(included)



ViroSafe® Fluid Trap
(sold separately; catalog #: VSFT10)

Direct connect cable as also available -
DCCM01 / DCCOV01

VisiClear® - Surgical Smoke Evacuator

VisiClear® is our most advanced acute care offering for surgical smoke evacuation. Combining Safeport Technology™, an occlusion warning, filter life tracking, and one-touch programmable procedure modes for open tubing, electrosurgical pencil, and laparoscopic procedures, VisiClear effectively captures and filters surgical smoke, particulates and other potentially hazardous by-products. The filter contains activated carbon known to adsorb gases.

100/120 Volt Systems.....	VC120
220/240 Volt Systems.....	VC220
(includes one filter and one footswitch)	
100/120 Volt Systems.....	VC120NF

ViroSafe® VisiClear® Filter.....	VS135 Series
Filter Life	18, 21, 35 hours (depending on the mode)

ViroVac® - Surgical Smoke Evacuator

ViroVac® surgical smoke evacuator provides ideal flow for physician offices and outpatient surgery centers. It combines customizable (variable) filter life, a compact shelf design, 3-port filter with filter life tracking technology, while exceeding expectations for value and efficacy.

100/120 Volt Systems VV120
 220/240 Volt Systems VV220
 (includes one filter and one footswitch)

100/120 Volt Systems VV120NF
 220/240 Volt Systems VV220NF
 (includes one filter and one footswitch)

ViroSafe® ViroVac® Filter VS353 Series
 Filter Life 18, 24, 35 hours (depending on flow rate)



Pneumatic Footswitch
(included)

ClearView™ Smoke Evacuation System

CONMED's ClearView™ Smoke Evacuation System is a compact, quiet and effective smoke evacuation solution with state-of-the-art ULPA filtration to combat airborne hazards by removing 99.999% of the smoke contaminants¹. Surgical smoke contains over 80 chemicals^{2,3} that have the same level of mutagenicity as 27-30 cigarettes⁴.

ClearView Smoke Evacuators

ClearView Smoke Evacuators – 100/120V,
 Includes: AC Power Cord, Automatic Activation Device,
 Pneumatic Footswitch, Operator's Manual,
 and one filter60-8585-120

ClearView Smoke Evacuators – 220/240V,
 Includes: AC Power Cord, Automatic Activation Device,
 Pneumatic Footswitch, Operator's Manual,
 and one filter60-8585-230

ClearView Accessories

ClearView Replacement Filter, 2/case60-8590-001

ClearView Automatic Activation Device60-8597-001

CONMED Fluid Trap, For use with ClearView Unit,
 10/pkg60-8596-001



¹Author; Environmental Protection Agency EPA-CICA Fact Sheet, EPA-425/F-03-023. Title: Air Pollution Control Technology Fact Sheet [2013].

²Al Sahaf OS, Vega-Carrascal I, Cunningham FO, McGrath JP, Bloomfield FJ. Chemical composition of smoke produced by high-frequency electrosurgery. *Ir J Med Sci.* 2007; 176(3):229-232.

³Moot AR, Ledingham KM, Wilson PF, et al. Composition of volatile organic compounds in dia thermally plume as detected by selected ion flow tube mass spectrometry. *ANZ J Surg.* 2007;77 (1-2):20-23.

⁴Hill DS, O'Neill JK, Powell RJ, Oliver DW. Surgical smoke—a health hazard in the operating theatre: a study to quantify exposure and a survey of the use of smoke extractor systems in UK plastic surgery units. *J Plast Reconstr Aesthet Surg.* 2012; 65(7):911-916.



Pneumatic Footswitch
(included)



EZLink®
(sold separately; catalog #: EZLINK01)



ViroSafe® Fluid Trap
(sold separately; catalog #: VSFT10)

Direct connect cable as also available -
DCCM01 / DCCOV01

Porta PlumeSafe® 604 - Surgical Smoke Evacuator

Porta PlumeSafe® 604 is an ideal surgical smoke evacuator for veterinarian and non-acute care settings where moderate flow is needed. The unit is portable, easy to use, and features patented technology to track filter life.

100/120 Volt 50/60 Hz PPS604
(includes one footswitch; filter sold separately)

Porta PlumeSafe® 604 Replacement Filters
VS06, VSXLL, VSXLLT, VSEY, VSOH, and VSVET Series
Filter Life6-24 hours (depending on model)

PlumeSafe® Turbo - Surgical Smoke Evacuator

PlumeSafe® Turbo is a powerful portable surgical smoke evacuator designed with sufficient flow for the aesthetic market. It features turbo suction power, an interactive LCD display and filter tracking technology. It can easily be placed on a counter, shelf, floor or other location convenient to the operative area.

100/120 Volt 50/60 HzPSWTURBO AS
 220/240 Volt 50/60 HzPSWTURBO_AS/220
 (includes one footswitch; filter sold separately)

PlumeSafe® Turbo Replacement Filters
 VS06, VSXLL, VSXLLT, VSEY, VSOH, and VSVET Series
 Filter Life 6-24 hours (Depending on Filter model and flow rate)

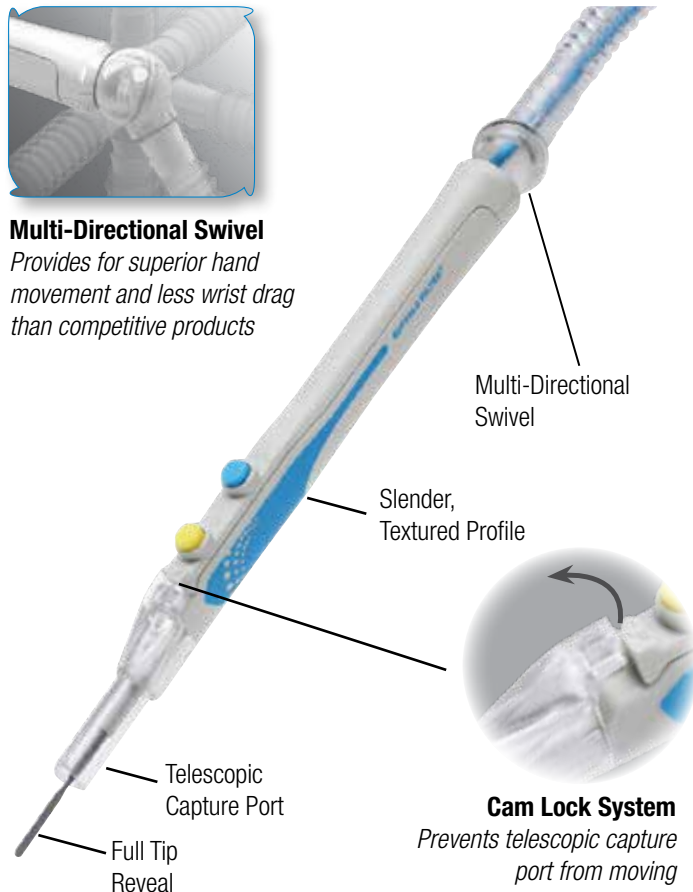


Pneumatic Footswitch
(included)



Multi-Directional Swivel

Provides for superior hand movement and less wrist drag than competitive products



Multi-Directional Swivel

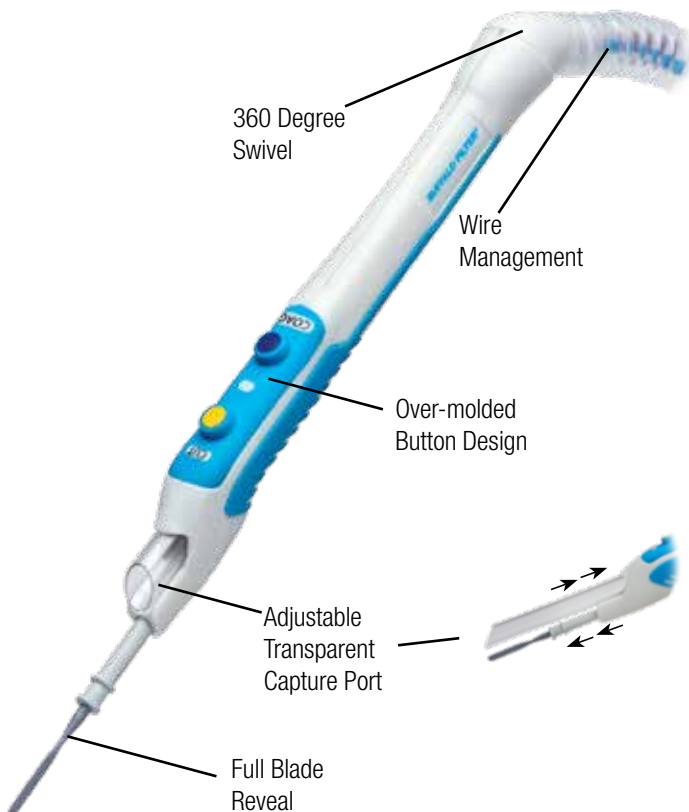
Slender, Textured Profile

Telescopic Capture Port

Full Tip Reveal

Cam Lock System

Prevents telescopic capture port from moving



360 Degree Swivel

Wire Management

Over-molded Button Design

Adjustable Transparent Capture Port

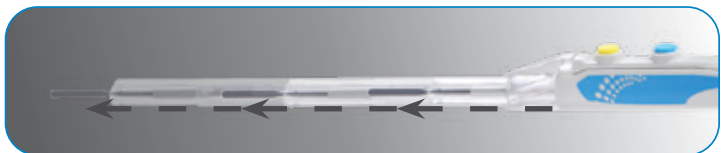
Full Blade Reveal

PlumePen® Ultra - Surgical Smoke Evacuation Pencils

No matter the surgical procedure, PlumePen® Ultra is up to the challenge. An addition to the PlumePen portfolio, Ultra offers a telescopic capture port with an advanced swivel design that will delight the surgeon with superior hand movement and less wrist drag. The Cam Lock System assures secure positioning allowing for precise application of energy to targeted tissue while removing hazardous surgical smoke.

PlumePen Ultra (Non-Stick ESU Blade) 20/casePLPUL2020
(Includes 3/8 in (9.5 mm) x 10 ft (3 m) hose/tubing & 7/8 in (22 mm) filter port adapter.)

PlumePen Ultra (Non-Stick ESU Blade) 20/casePLPUL2520
(Includes 3/8 in (9.5 mm) x 15 ft (4.6 m) hose/tubing & 7/8 in (22 mm) filter port adapter.)



Telescopic Capture Port

Extends up to 5.3 in (135 mm)

PlumePen® Elite - Surgical Smoke Evacuation Pencils

Pushing the boundaries through design innovation, PlumePen® Elite features a compact, ultra slim, ergonomic design that is significantly smaller than competitive electrosurgical smoke pencils. PlumePen Elite offers the comfort and advanced feature set surgeons demand.

PlumePen Elite (Stainless Steel ESU Blade) 20/case.....PLP1020
(Includes 3/8 in (9.5 mm) x 10 ft (3 m) tubing with adapter to 7/8 in (22 mm) port.)

PlumePen Elite (Non-Stick ESU Blade) 20/case.....PLP2020
(Includes 3/8 in (9.5 mm) x 10 ft (3 m) tubing with adapter to 7/8 in (22 mm) port.)

PlumePen Elite (Non-Stick ESU Blade) 20/case.....PLP2520
(Includes 3/8 in (9.5 mm) x 15 ft (4.6 m) tubing with adapter to 7/8 in (22 mm) port.)

PlumePen® Pro Surgical Smoke Evacuation Pencils

PlumePen® Pro is as a cost effective solution combining precision surgical smoke management and electrosurgery without compromising quality or features. Pro is a perfect solution for surgeries where a pencil adapter is less optimal.

PlumePen Pro (Non-Stick ESU Blade)

20/case..... PLPRO4020
(Includes 3/8 in (9.5 mm) x 10 ft (3 m) tubing with adapter to 7/8 in (22 mm) port.)

PlumePen Pro (Non-Stick ESU Blade)

20/case..... PLPRO4520
(Includes 3/8 in (9.5 mm) x 15 ft (4.6 m) tubing with adapter to 7/8 in (22 mm) port.)

Capture Ports (X-ray detectable)

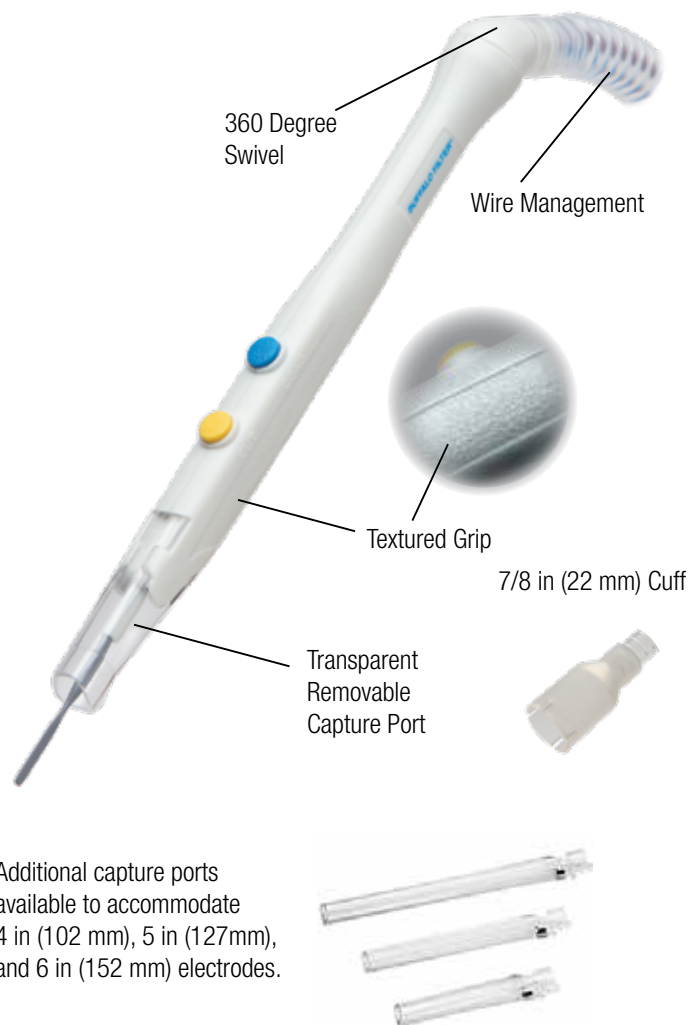
20/case..... PROTIP420
(Accommodates 4 in [102 m] electrodes)

Capture Ports (X-ray detectable)

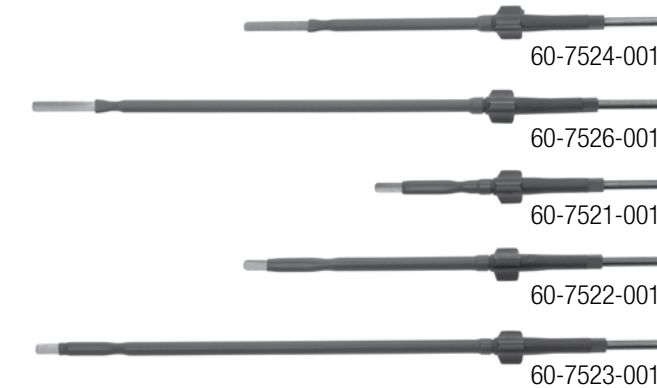
20/case..... PROTIP520
(Accommodates 5 in [127 m] electrodes)

Capture Ports (X-ray detectable)

20/case..... PROTIP620
(Accommodates 6 in [152 m] electrodes)



Additional capture ports available to accommodate 4 in (102 mm), 5 in (127mm), and 6 in (152 mm) electrodes.



GoldVac® Slim Smoke Evacuation Pencils

GoldVac Slim Pencils offer an ergonomic design – allowing for a surgical experience and technique that’s virtually indistinct from a standard pencil. Tapered lumen allows for unobstructed visualization of the target tissue.

GoldVac Slim Smoke Evacuation Pencils

- GoldVac Slim Pencil, Push Button,
1" UltraClean Blade Electrode
10' of 9.5mm tubing, Disposable, 20/case60-7610-001
- GoldVac Slim Pencil, Push Button,
1" UltraClean Blade Electrode
15' of 9.5mm tubing, Disposable, 20/case60-7670-001

GoldVac® Smoke Evacuation Pencils

GoldVac Pencils allow the surgeon to position the 6" extendable smoke elimination tube anywhere along the active electrode for effective smoke capture, with accessibility and visibility of the surgical site. Swivels 360° to eliminate wrist drag, and enable maximum maneuverability.

GoldVac Smoke Evacuation Pencils

- GoldVac Pencil, Push Button, 1" UltraClean Blade Electrode,
10' Tubing, Disposable, 10/case60-7510-005
- GoldVac Pencil, Rocker Switch, 1" UltraClean Blade Electrode,
10' Tubing, Disposable, 10/case60-7520-005
- GoldVac Pencil, Foot Control, 1" UltraClean Blade Electrode,
10' Tubing, Disposable, 10/case60-7530-005
- GoldVac Pencil, Push Button, 1" UltraClean Blade Electrode,
15' Tubing, Disposable, 10/case60-7570-005
- GoldVac Pencil, Rocker Switch, 1" UltraClean Blade Electrode,
15' Tubing, Disposable, 10/case60-7580-005

GoldVac UltraClean Electrodes

- 4" GoldVac UltraClean Blade, 25/case60-7524-001
- 6" GoldVac UltraClean Blade, 25/case60-7526-001
- 1" GoldVac UltraClean Blade with Extended Insulation
25/case.....60-7521-001
- 4" GoldVac UltraClean Blade with Extended Insulation
25/case.....60-7522-001
- 6" GoldVac UltraClean Blade with Extended Insulation
25/case..... 60-7523-001

SnapEvac® Surgical Smoke Evacuation Pencils

SnapEvac™ is an ergonomically designed smoke evacuation electrosurgical pencil adapter that transforms most hyfrecator hand-switch pencils and electrosurgical pencils into a surgical smoke evacuation device that captures smoke plume at the point of creation.

SnapEvac

20/case SnapEvac20

(Designed using ABS plastic and a polycarbonate capture port.

Includes 10 ft (3 m) tubing with a 7/8 in (22 mm) cuff.)



ClearVac® Smoke Evacuation Pencils

ClearVac® Pencils provide a cost effective solution to remove surgical smoke. Comfortable grip, lightweight tubing and multiple configurations makes transition easier to meet your specific clinical needs.

ClearVac Electrosurgical Pencil Smoke Attachment with 12" of 10mm Tubing and 5-in-1 Adapter, Single Use, Sterile, 25/case 60-6827-001A

ClearVac GoldLine Push Button Electrosurgical Pencil Smoke Attachment with 4' of 10mm Tubing and 6' of 22mm Tubing, Standard Blade Electrode, Holster, Single Use, Sterile, 10/case 60-6828-001A

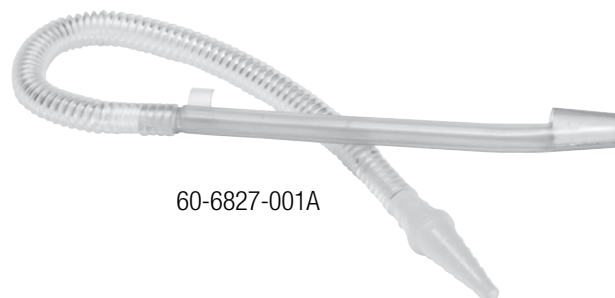
ClearVac GoldLine Rocker Switch Electrosurgical Pencil Smoke Attachment with 4' of 10mm Tubing and 6' of 22mm Tubing, Standard Blade Electrode, Holster, Single Use, Sterile, 10/case 60-6829-001A

ClearVac GoldLine Push Button Electrosurgical Pencil Smoke Attachment with 4' of 10mm Tubing and 6' of 22mm Tubing, UltraClean Blade Electrode, Holster, Single Use, Sterile 10/case 60-6828-005A

ClearVac GoldLine Rocker Switch Electrosurgical Pencil Smoke Attachment with 4' of 10mm Tubing and 6' of 22mm Tubing, UltraClean Blade Electrode, Holster, Single Use, Sterile, 10/case 60-6829-005A

ClearVac Electrosurgical Smoke Evacuation Handpiece Attachment with 4' of 10mm Tubing and 6' of 22mm Tubing, Single Use, Sterile, 10/case 60-6839-001A

ClearVac GoldLine Foot Control Electrosurgical Pencil Smoke Attachment with 4' of 10mm Tubing and 6' of 22m Tubing, UltraClean Blade Electrode, Holster, Single Use, Sterile, 10/case 138663A



60-6827-001A



60-6828-005A



PA1025, PA1025CB,
PA2010, PA2010CB



PA2010B, PA2010BCB

PenAdapt® - Surgical Smoke Evacuation Pencils

PenAdapt® is an ergonomically designed pencil adapter that captures surgical smoke at the point of creation. Expertly engineered to position the capture inlet as close to the point of surgical smoke creation as possible, PenAdapt was designed to minimize any change to the feel of the pencil or the surgeon's line of vision. PenAdapt accommodates most electrosurgical pencils.

PenAdapt
Ideal for wall suction applications.
25/case..... PA1025
(Includes 3/8 in (9.5 mm) x 1 ft (30.5 cm) tubing with an adapter to 3/8 in (9.5 mm) tube.)

PenAdapt (Cut-back)
Ideal for wall suction applications. Cut-back adapter provides increased visibility.
25/case..... PA1025CB
(Includes 3/8 in (9.5 mm) x 1 ft (30.5 cm) tubing with an adapter to 3/8 in (9.5 mm) tube.)

PenAdapt
Ideal for surgical smoke evacuator applications.
10/case..... PA2010
(Includes 3/8 in (9.5 mm) x 4 ft (1.22 m) tubing with an adapter to 7/8 in (22 mm) x 6 ft (1.8 m) tube.)

PenAdapt (Cut-back)
Ideal for surgical smoke evacuator applications. Cut-back adapter provides increased visibility.
10/case..... PA2010CB
(Includes 3/8 in (9.5 mm) x 4 ft (1.22 m) tubing with an adapter to 7/8 in (22 mm) x 6 ft (1.8 m) tube.)

PenAdapt
Ideal for attachment to reusable electrosurgical pencil applications.
10/case..... PA2010B
(Includes 3/8 in (9.5 mm) x 4 ft (1.22 m) tubing with an adapter to 7/8 in (22 mm) x 6 ft (1.8 m) tube.)

PenAdapt
Ideal for attachment to reusable electrosurgical pencil applications. Cut-back adapter provides increased visibility.
10/case..... PA2010BCB
(Includes 3/8 in (9.5 mm) x 4 ft (1.22 m) tubing with an adapter to 7/8 in (22 mm) x 6 ft (1.8 m) tube.)

1/4 in (6.4 mm) Smoke Evacuation Tubing

NON-STERILE

Excellent for use with filtered wall suction and for situations where space is limited.

1/4 in (6.4 mm) x 2 ft (.6 m) 5/case ST10105

3/8 in (9.5 mm) Smoke Evacuation Tubing

STERILE

Excellent for use in an office setting and in small pockets where space is limited.

3/8 in (9.5 mm) x 10 ft (3.0 m) 10/caseVT38S1010

7/8 in (22 mm) Smoke Evacuation Tubing

The most common and versatile size of tubing, combining a compact size and increased airflow.

STERILE

7/8 in (22 mm) x 6 ft (1.8 m) 24/caseVT10424

7/8 in (22 mm) x 10 ft (3.0 m) 24/caseVT10624

NON-STERILE

7/8 in (22 mm) x 6 ft (1.8 m) with (12) 7/8 in tubing-to-tubing connectors (extension tubing) 24/caseVT10324

7/8 in (22 mm) x 10 ft (3.0 m) 10/case VT10524-10

7/8 in (22 mm) x 10 ft (3.0 m) 24/caseVT10524

7/8 in (22 mm) x 6 ft (1.8 m) 6/case VT78-6

7/8 in (22 mm) x 2.5 ft (.7 m) (Replaces suction canister connecting tube) 10/caseVT10610

1-1/4 in (32 mm) Smoke Evacuation Tubing

A wide diameter tubing, ideal for cases producing large amounts of smoke and odors such as aesthetic procedures and Trans-urethral Resection of the Prostate (TURP) procedures.

STERILE

1-1/4 in (32 mm) x 6 ft (1.8 m) 6/caseVT10206

NON-STERILE

1-1/4 in (32 mm) x 6 ft (1.8 m) 6/caseVT10106

1-1/4 in (32 mm) x 10 ft (3.0 m) 6/caseVT10306

1-1/4 in (32 mm) x 2 ft (.6 m) 10/caseVT10510

1-3/8 in (35 mm) Erbiu^m: Yag Tubing Kit

NON-STERILE

1-3/8 in (35 mm) x 6 ft (1.8 m) tube (replace as needed) and six 2 ft (.6 m) length tubes with integral wand & sponge guard to be replaced each procedure (1/kit) VTEYKIT





Speculum Tubing

STERILE

Ideal for connection to surgical speculum, laryngoscope, or small area applications.

7/8 in (22 mm) x 6 ft (1.8 m) with 7/8 in (22 mm) to 1/4 in (6.4 mm) reducer to 1/4 in (6.4 mm) x 2 ft (.6 m) tubing (5/case)..... VTESU05

NON-STERILE

Ideal for connection to surgical speculum or small area applications.

7/8 in (22 mm) x 6 ft (1.8 m) with 7/8 in (22 mm) to 1/4 in (6.4 mm) reducer to 1/4 in (6.4 mm) x 2 ft (.6 m) tubing (5/case) PSFTS05

LEEP Tubing Set

10' (3.05m), Non-Sterile60-6815-001

Pencil Adapter Tubing Set

STERILE

7/8 in (22 mm) x 6 ft (1.8 m) with 7/8 in (22 mm) to 3/8 in (9.5 mm) reducer and 3/8 in (9.5 mm) x 4 ft (1.2 m) (10/case) VTVIC10

7/8 in (22 mm) Tubing with Wand and Sponge Guard

STERILE

7/8 in (22 mm) x 6 ft (1.8 m) tubing with 8 in (20 cm) integral wand and sponge guard (24/case)VTWT424

Hand-held Smoke Evacuation Tubing (5/case, 1/pkg)

6' (1.8m), 7/8" diameter, Single Use, Sterile60-6805-001

7/8 in (22 mm) x 10 ft (3.0 m) tubing with 8 in (20 cm) integral wand and sponge guard (24/case)VTWT624

7/8 in (22 mm) x 14 ft (4.3 m) tubing with 8 in (20 cm) integral wand and sponge guard (5/case)VTWT805

7/8 in (22 mm) x 10 ft (3.0 m) tubing with 8 in (20 cm) integral wand and sponge guard with 7/8 in to 1-3/8 in (35 mm) adapter (10/case).....VTWTS10

NON-STERILE

7/8 in (22 mm) x 6 ft (1.8 m) tubing with 8 in (20 cm) integral wand and sponge guard (24/case)VTWT324

7/8 in (22 mm) x 10 ft (3.0 m) tubing with 8 in (20 cm) integral wand and sponge guard (24/case)VTWT524

1-1/4 in (32 mm) Tubing with Wand and Sponge Guard

STERILE

1-1/4 in (32 mm) x 6 ft (1.8 m) tubing with 8 in (20 cm) integral wand and sponge guard (6/case).....VTWT206

1-3/8 in (35 mm) Tubing with Wand and Sponge Guard

STERILE

1-3/8 in (35 mm) x 6 ft (1.8 m) with wand and sponge guard (5/case).....VTWT505

1-3/8 in (35 mm) x 10 ft (3.0 m) with wand and sponge guard (5/case).....VTWT515

7/8 in (22 mm) Tubing with Adapters

STERILE

7/8 in (22 mm) to 1/4 in (6.4 mm) reducer fitting with
2 ft (.6 m) x 1/4 in (6.4 mm) tubing (10/case) RF10210

NON-STERILE

7/8 in (22 mm) to 1/4 in (6.4 mm) reducer fitting with
2 ft (.6 m) x 1/4 in (6.4 mm) tubing (10/case) RF10110

Reducer Fittings/Adapters (Non-Sterile)

7/8 in (22 mm) to 1/4 in (6.4 mm) reducer fitting
(12/case) RF10112

7/8 in (22 mm) to 1/4 in (6.4 mm) reducer fitting
with 2 in (5.1 cm) cuff (24/case) RF12524

7/8 in (22 mm) to 3/8 in (9.5 mm) reducer fitting
with 2 in (5.1 cm) cuff (24/case) RF783824

7/8 in (22 mm) to 3/8 in (9.5 mm) reducer fitting
(12/case) RF10512

1-3/8 in (35 mm) to 7/8 in (22 mm) reducer fitting
(5/case) RF10705

1-3/8 in (35 mm) to 3/8 in (9.5 mm) reducer fitting
(10/case) RF13810

7/8 in to 1/4" reducer adapter
(12/case) 60-6840-001



RF10112



RF12524



RF10512



RF783824



RF13810



RF10705





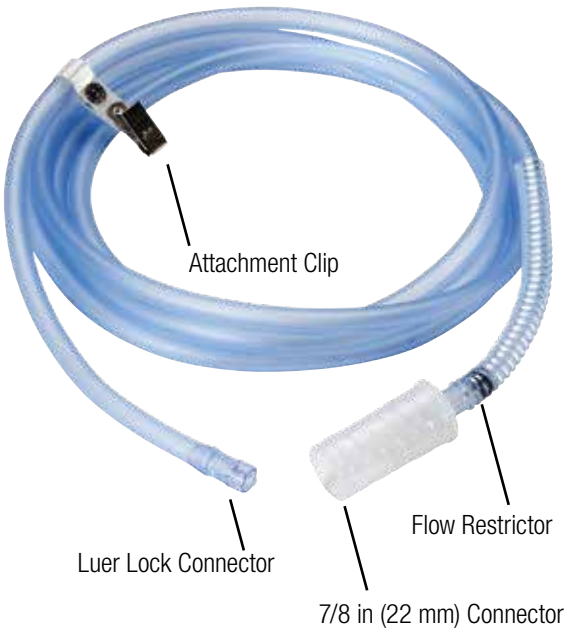
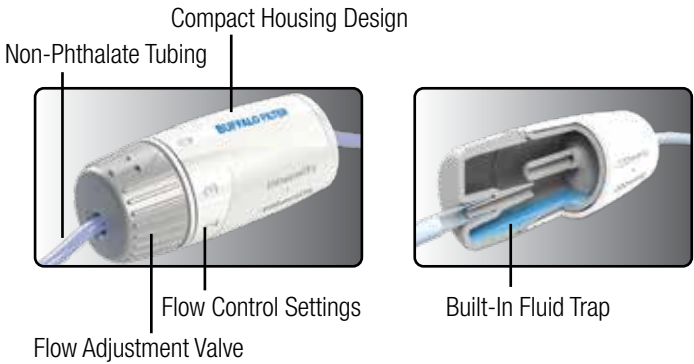
PlumePort® Activ®

PlumePort® Activ® is the first line of defense designed for safe, effective removal of surgical smoke during laparoscopic procedures. Activ® easily attaches to standard trocars and utilizes readily available suction systems providing noiseless operation.

With a built-in fluid trap, moisture is effectively managed throughout the entire procedure to ensure uninhibited flow and prevent filter saturation without compromising the integrity of the filtration media.

Activ provides up to 50% more flow capability than competitive passive laparoscopic filters while maintaining ULPA filtration and significantly outperforms competitive devices when exposed to high moisture environments. In addition to ULPA filtration, Activ contains activated carbon known to adsorb gases.

PlumePort Activ (10/case) PP010CS



PlumePort® SEO - Laparoscopic Solutions

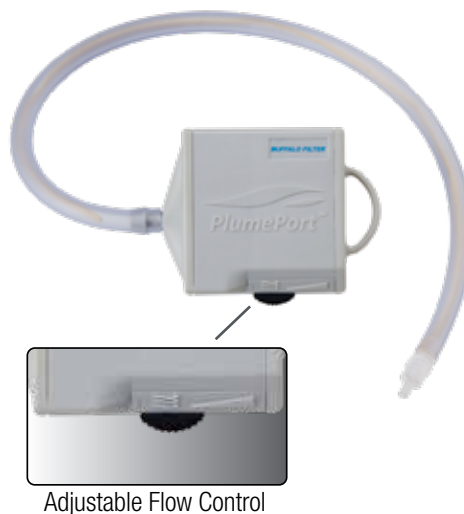
PlumePort® SEO easily connects from a standard trocar to a smoke evacuator for efficient and safe removal of surgical smoke during laparoscopic procedures. Utilizing available surgical smoke evacuators and coupling it with this flow controlled device, PlumePort SEO provides fast and safe smoke management while maintaining peritoneal distention.

PlumePort SEO (12/case)..... PP012SEO

PlumePort®

PlumePort® is a passive laparoscopic smoke filtration device with integrated ULPA filtration coupled with activated carbon to safely filter the aerosolized contents of peritoneal smoke during laparoscopy. Containing more than two times the ULPA media as competitive passive devices, and a dual management moisture control process of a wicking agent and fluid trap, PlumePort offers essential media integrity for greater protection during longer cases.

PlumePort (10/case) PP010



PlumePort® SEV

PlumePort® SEV is a sterile laparoscopic smoke filtration device that connects from a standard surgical trocar to a smoke evacuator for efficient and safe removal of surgical smoke during laparoscopic procedures. The surgical smoke evacuation is controlled via the surgical smoke removal valve.

PlumePort SEV (12/case)..... BLAP100V



PlumePort® SE

PlumePort® SE is sterile smoke management tubing that connects from a standard surgical trocar to a smoke evacuator for efficient and safe removal of surgical smoke during laparoscopic procedures.

PlumePort SE (12/case)..... BLAP100



Laparoscopic Tubing

Laparoscopic Smoke Evacuation Tubing Set (5/case, 1/pkg)
10' (3.05m), 1/4" diameter w/ luer lock, Single Use; Sterile60-6810-001



ViroSafe® 6 Filter

Designed to fit PlumeSafe® Turbo; Porta PlumeSafe® 604

Lasts for 6 hours of smoke evacuation time and captures 0.1 to 0.2 micron particles at 99.999% efficiency.

Dual male ports — 7/8 in (22 mm) and 1–1/4 in (32 mm).

(1/case).....	VS06001
(2/case).....	VS06002
(4/case).....	VS06004



ViroSafe® 6 Twin Port Filter

Designed to fit PlumeSafe® Turbo; Porta PlumeSafe® 604

Lasts for 6 hours of smoke evacuation time.

Twin male ports — 7/8 in (22 mm).

(4/case).....	VS06T04
---------------	---------

ViroSafe® Extra Long Life Filter

Designed to fit PlumeSafe® Turbo; Porta PlumeSafe® 604

Lasts for 18 hours of smoke evacuation time.

Dual male ports — 7/8 in (22 mm) and 1–1/4 in (32 mm).

(2/case) VSXLL02

(4/case) VSXLL04



ViroSafe® Extra Long Life Twin Port Filter

Designed to fit PlumeSafe® Turbo; Porta PlumeSafe® 604

Lasts for 18 hours of smoke evacuation time.

Twin male ports — 7/8 in (22 mm).

(1/case) SING-VSXLLT

(2/case) VSXLLT02

(4/case) VSXLLT04





ViroSafe® Veterinary Filter

Designed to fit PlumeSafe® Turbo; Porta PlumeSafe® 604

Lasts for 24 hours of smoke evacuation time and captures 0.1 to 0.2 micron particles at 99.999% efficiency.

Dual male ports — 7/8 in (22 mm) and 1-1/4 in (32 mm)

Most economical choice for animal hospitals and clinics.

(1/case).....VSVET01



ViroSafe® Erbium: YAG Filter

Designed to fit PlumeSafe® Turbo; Porta PlumeSafe® 604

Specifically designed for use with the Erbium: Yag laser applications.

Lasts for 12 hours of smoke evacuation time when used with pre-filters BFEY04PF and captures particles 0.1 to 0.2 micron particles at 99.999% efficiency.

Dual male ports — 7/8 in (22 mm) and 1-1/4 in (32 mm).

(1/case)..... SING VSEY



ViroSafe® Erbium: YAG Kit

Designed to fit Erbium: Yag laser applications

Using Erbium: YAG pre-filters helps to protect the efficacy of the ViroSafe® Erbium: YAG main filter (ensuring that it lasts for 12 hours of smoke evacuation time).

The pre-filter has a 1-3/8 in (35 mm) male port at each end—one to attach to the 1-1/4 in (32 mm) opening on the Main Erbium: YAG filter and another to attach to a 1-3/8 in (35 mm) tubing set.

Efficiency

Main Filter: captures particles 0.1 to 0.2 micron particles at 99.999% efficiency

Pre-filter: 0.3–0.5 micron filtration

Usage Time

Main Filter: 12 hours

Pre-filter: 1–3 procedures

(1 Main Filter, 4 Pre-filters) VSEY1-4



Pre-filter

Not available in the United States

Pre-filter, Single Use

(20/case)..... PRFIL20

ViroSafe® Odor / Hair Removal Filter

Designed to fit PlumeSafe® Turbo; Porta PlumeSafe® 604

Ideal for procedures such as laser hair removal that create malodorous smoke and gases.

Lasts for 24 hours of smoke evacuation time and captures 0.1 to 0.2 micron particles at 99.999% efficiency.

Dual male ports — 7/8 in (22 mm) and 1-1/4 in (32 mm).

(1/case) VS0H001

(2/case) VS0H002

ViroSafe® Pre-Filter

Designed to fit ViroSafe® main filter

Single port pre-filter may be attached to a ViroSafe main filter to help capture small amounts of liquid and particulate to protect and maintain its efficacy. This pre-filter should be changed after every use.

(10/case) BFPF7/8-10

ViroSafe® ViroVac® Filter

Designed to fit ViroVac®

4 layers of proven filtration gross particulate, ULPA media, activated carbon, and post filter.

Last up to 35 hours of smoke evacuation time and captures 0.1 to 0.2 micron particles at 99.999% efficiency.

Hidden ports reduce the risk to caregivers of cross contamination.

3-port filter — 1/4 in (6.4 mm), 3/8 in (9.5 mm) and 7/8 in (22 mm)

(1/case) VS353

(2/case) VS35302

(4/case) VS35304

ViroSafe® VisiClear® Filter

Designed to fit VisiClear®

Safeport Technology™ prevents the clinician from accidental touching an exposed port when not in use. Customized filter life for acute care applications.

Lasts for up to 35 hours of smoke evacuation time and captures 0.1 to 0.2 micron particles at 99.999% efficiency.

3-port filter — 1/4 in (6.4 mm), 3/8 in (9.5 mm) and 7/8 in (22 mm).

(1/case) VS135

(2/case) VS1352

(4/case) VS1354





BILF150 Multi-Use In-Line Filter

Captures particulate before it enters wall suction systems.
Ideal for connection to wall suction port.

ULPA rated media, 0.1 to 0.2 micron.

Economical and easy to use.

As recommended by AORN, surgical smoke should be filtered before it reaches the wall to protect suction systems.

(10/case).....BILF150



BILF200 Multi-Use In-Line Filter

Captures particulate before it enters wall suction systems.
Ideal for connection to canister tree

ULPA rated media, 0.1 to 0.2 micron.

Economical and easy to use.

Single 1/4 in (6.4 mm) to 3/8 in (9.5 mm) detached tube.

(10/case).....BILF200

AER Defense FilterOne ULPA Rated

(2/case, 1/pkg)60-8084-001

Buffalo Filter offers an expansive array of filters for OEM and Competitive manufacturer's of surgical smoke evacuators. We have replacement filters for the following manufacturers:

Stryker: Replacement filters for StrykeVac, StrykeVac 3 and Neptune 2 Ultra

Berchtold: A series of replacement filters designed for the Berchtold Phoenix and TeleVac.

CONMED: Replacement filters for the CMIS, ConMed Aspen Vac and Hyfre-VAC filters

TRUMPF: Replacement filters for TRUMPF EasyVac

Valleylab: Replacement pre-filters and filters for Valleylab Optimumm, Airforce, ValleyVac

Please cross-reference the manufacturer's filter model number below to the equivalent Buffalo Filter replacement filter for that system.

Smoke Evacuator Filter for Stryker Neptune 2 and Neptune 3

Designed to fit Stryker Neptune 2 and Stryker Neptune 3

3-port filter — 1/4 in (6.4 mm), 3/8 in (9.5 mm) and 7/8 in (22 mm).

(1/case)..... VSNEP01

(4/case)..... VSNEP04



Berchtold TeleVac & TeleVac LT

Replaces Berchtold TELEVAC LT and Surgimedics 901428

Lasts for 8 hours of smoke evacuation time.

7/8 in (22 mm) port.

(4/case)..... BTLD004



Berchtold Phoenix XS or X3 Filter

Replaces Berchtold TELEVAC XS/X3

Lasts for 8 hours of smoke evacuation time.

7/8 in (22 mm) port.

(4/case)..... BTLDXS04



StrykeVac 1 & 2 ViroSafe® Filter

Designed to fit Integrated StrykeVac Smoke Evacuation System

Lasts up to 24 hours of smoke evacuation time.

4-port filter — 1/4 in (6.4 mm), 3/8 in (9.5 mm), 7/8 in (22 mm) and 1-1/4 in (32 mm).

(1/case)..... VSSV505

(2/case)..... VSSV50502





StrykeVac 3 ViroSafe® Filter

Designed to fit StrykeVac 3 Smoke Evacuation System

Lasts up to 24 hours of smoke evacuation time.

3-port filter — 1/4 in (6.4 mm),
3/8 in (9.5 mm) and 7/8 in (22 mm).

(1/case).....	VSSV301
(2/case).....	VSSV302
(4/case).....	VSSV304



TRUMPF ViroSafe® Filter (EasyVac Filter for TRUMPF EasyVac)

Designed to fit TRUMPF EasyVac

Lasts for 8 hours of smoke evacuation time.

3-port filter — 1/4 in (6.4 mm), 3/8 in (9.5 mm)
and 7/8 in (22 mm).

(1/case).....	VSTR08
(4/case).....	VSTR0804



Valleylab Optimumm Pre-filters

Replaces Surgimedics 901202; Valleylab E3630; Valleylab Optimumm pre-filter

1–3/8 in (35 mm) port pre-filter.

(30/case).....	BSPF030
----------------	---------

EZLink®

Activation Device used to remotely turn all current Buffalo Filter surgical smoke evacuators on and off in conjunction with Electrosurgical Unit activation saving filter life.

Adjustable delay allows for capture of residual smoke that may be present after deactivation of electrosurgery devices.

Multiple cautery pencils can be accommodated with one EZLink device providing savings and convenience to facility.

Easy set-up; requires no programming.

(1/case).....EZLINK01



Pneumatic Footswitch

Designed to work with all current Buffalo Filter surgical smoke evacuators.

Features 10 ft length (3.0 m).

(1/case).....FS10004



Virosafe® Fluid Trap

Designed to capture fluids to help maintain the integrity of the filtration system and assist with maintaining filter life.

Translucent design with simple to read measurement increments (holds up to 100 cc fluid capacity).

Easy to attach and remove with cap holder for easy storage of caps during use.

7/8 in (22 mm) and 1/4 in (6.4 mm) tubing connection ports.

Fits 7/8 in (22 mm) port of Buffalo Filter ViroSafe Filters.

(10/case).....VSFT10



Direct Connect Cables

Direct Connect Cable for ConMed Electrosurgical Units (certain models only) and Buffalo Filter Smoke Evacuators

(1/case).....DCCM01

Direct Connect Cable for Covidien Electrosurgical Units (certain models only) and Buffalo Filter Smoke Evacuators

(1/case).....DCCOV01





PlumePen® Pro Capture Ports

4 in (102 mm) Capture Ports for PlumePen Pro (20/case)	PROTIP420
5 in (127 mm) Capture Ports for PlumePen Pro (20/case)	PROTIP420
6 in (152 mm) Capture Ports for PlumePen Pro (20/case)	PROTIP620



Y Adapter

7/8 in (22 mm) Y Adapter with connectors. (1/case)	ADP22X22Y
---	-----------



LaseAdapt® SC Contour TRL Hand Piece Adapter

Designed to attach directly to the hand piece LaseAdapt SC series of laser attachments capture laser generated airborne contaminants (LGAC's) and eliminates need to hold a surgical smoke evacuation tube.

7/8 in (22 mm) connector (10/case)	LA3010EY10
---	------------



LaseAdapt® ProFractional Therapy Hand Piece Adapter

Designed for the Sciton® ProFractional Therapy™ Laser System

Designed to attach directly to the hand piece, LaseAdapt SC series of laser attachments capture laser generated airborne contaminants (LGAC's) and eliminates need to hold a surgical smoke evacuation tube.

7/8 in (22 mm) connector (10/case)	LA3010PF10
---	------------



LaseAdapt Hand Piece Adapter Clips

LaseAdapt Reuseable Tubing Clips.

Designed for the Sciton® Contour TRL™ Erbium Scanner and ProFractional Therapy™ Laser Systems.

(4/case)	LA3010CL4
----------------	-----------

Armstand

Great for office applications. Provides hands-free positioning of the smoke evacuation tubing. Velcro tubing fasteners included.

10 in (25.4 cm) x 10 in (25.4 cm) x 34 in (86.4 cm)
(1/case)..... ARMSTAND



EvacuCart™

Lightweight, transport cart with locking wheels for Buffalo Filter branded surgical smoke evacuators.

15 in (38.1 cm) x 17.5 in (44.5 cm) x 32 in (81.3 cm)
(1/case)..... ETC01



ViroVac® Wall Mount Kit

Wall mount kit designed for ViroVac surgical smoke evacuator.

Includes base and wall mount plates, screws, and tri-wall anchors to properly mount unit.

(1/case)..... VVWM01



Smoke Accessories Basket

System 5000 Mobile Pedestal Saddlebag Lower Basket for use with the AER Defense and System 1200 Smoke Evacuator Units

(1/each)60-8041-001

The Pathway to Electrosurgical Patient Safety (1 Contact Hour)

The purpose of this seminar is to provide perioperative nurses and other surgical team members information on patient safety during electrosurgical procedures. Fundamental principles of electricity and electrosurgery are addressed and guide the discussion towards the significance of creating a safe surgical environment and how to prevent potential hazards.

Learning objectives:

- Describe the basics of electricity
- Define scientific terminology that governs the use of electricity in surgery
- Discuss principles of electrosurgery
- Compare and contrast active electrodes, dispersive pads, and electrosurgical generators
- Describe imperative safety measures when providing patient care during electrosurgical procedures
- Identify key factors to be considered when using electrosurgical medical devices



Argon Beam Coagulation: Patient Benefits and Safety (1 Contact Hour)

The purpose of this seminar is to provide nurses and other healthcare team members information regarding patient care issues during the application of argon beam coagulation. In order to properly apply this technology, a basic knowledge of electricity and its application to patient care procedures is necessary. Combining argon gas and electrosurgical energy to accomplish desired tissue responses requires an awareness of specific patient safety considerations. The patient benefits and procedural advantages are presented and the standard safety practices are reviewed.

Learning objectives:

- Explain scientific principles of argon beam coagulation
- Identify the properties of argon gas
- Describe the tissue effects related to argon beam coagulation
- Differentiate the benefits of argon beam coagulation to conventional electrosurgery
- Discuss patient care safety principles

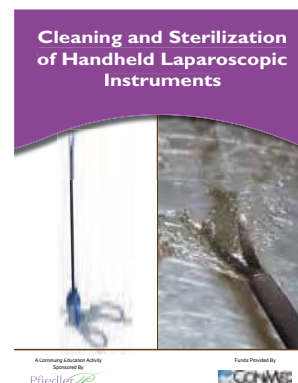


Cleaning and Sterilization of Handheld Laparoscopic Instruments (2 Contact Hours)

The purpose of this seminar is to educate nurses and other surgical team members on the proper care, cleaning, and sterilization of specialized instrumentation, in order to reduce the risk of health care associated infections. The seminar will provide an overview of the clinical implications of cleaning and sterilizing handheld laparoscopic instruments in today's dynamic surgical practice setting. This continuing education activity will review the clinical and economic impact of healthcare associated infections, current guidelines, and professional recommendations for proper cleaning and sterilization of surgical instruments.

Learning objectives:

- Identify the clinical and economic impact of health care-associated infections today
- Discuss professional guidelines and recommendations for the cleaning and sterilization
- Describe the documentation needed from an instrument manufacturer regarding validation of instrument cleaning and sterilization techniques



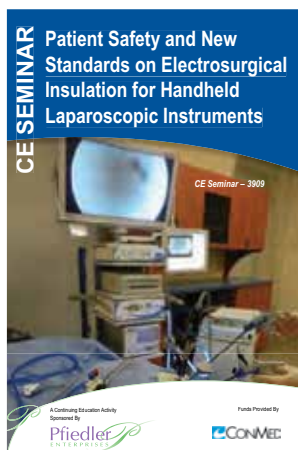
Surgical Smoke: Avoiding the Risks (1 Contact Hour)

The purpose of this seminar is to acquaint perioperative nurses and other members of the surgical team with the risks associated with surgical smoke plume. Research has demonstrated that annually, some 500,000 surgical team members are exposed to airborne contamination from surgical smoke. Frequently, patients are exposed to these same potential contaminants.

Learning objectives:

- Describe the content of surgical smoke plume
- Identify the hazardous components of plume
- Discuss potential diseases that can occur from plume transmission
- Describe symptoms of plume exposure
- Differentiate the various safety techniques for reducing exposure to plume
- Compare and contrast the various surgical smoke evacuation systems
- Describe the importance of suction tubing size to evacuation rates
- Discuss recommended practices related to surgical smoke plume





Patient Safety and New Standards on Electrosurgical Insulation for Handheld Laparoscopic Instruments (2 Contact Hours)

The purpose of this seminar is to provide nurses and other surgical team members information on patient safety and new standards on electrosurgical insulation for handheld laparoscopic instruments in order to create and maintain a safe surgical environment. This continuing education activity will provide a fundamental overview of electricity and electrosurgical systems, discuss the issues that create potential patient risk for electrosurgical injury, and provide recommendations for safety.

Learning Objectives:

- Explain the properties of electricity
- Describe electrosurgical devices, specifically each component part
- Differentiate the tissue effects resulting from the various applications of electrosurgical energy
- Identify the potential dangers associated with the use of monopolar electrosurgery during laparoscopy
- Discuss key patient safety issues related to the use of insulated electrosurgery laparoscopic equipment
- Recognize the revised IEC 60601-1 and 60601-2-2 standards for the manufacture of insulated electrosurgery laparoscopic instruments

Study Guides

Electrosurgical Patient Safety Study Guide (2 Contact Hours)

The purpose of this study guide is to provide perioperative nurses and other healthcare professionals with the basic knowledge and skills necessary for the safe use of electrosurgical equipment. The knowledge acquired will help you to provide quality patient care.

Learning objectives:

- Explain what electricity is and the application of electrical properties to electrosurgery
- Describe how electrosurgical devices work and how electrosurgical energy affects body tissue
- List preoperative, intraoperative, and postoperative safety measures that can be taken by the perioperative nurse to ensure that patients will have no adverse effects related to the application of electrosurgical energy
- Discuss electrosurgical hazards and safety measures that are unique to minimally invasive surgical procedures and to patients with cardiac pacemakers
- State how electrosurgical safety considerations relate to the six steps in the nursing process



Avoiding the Hazards of Surgical Smoke Study Guide (2 Contact Hours)

The purpose of this study guide is to acquaint perioperative personnel with the hazards inherent to exposure to surgical smoke and aerosol and measures that can be taken to minimize this hazard. The generation of surgical smoke by lasers, electrosurgery, and powered surgical instruments is discussed. Regulations and agency recommendations that relate to the use of smoke evacuation systems are listed. Factors to be taken into consideration when choosing the smoke evacuation system are explored.

Learning objectives:

- Identify the components of surgical smoke and aerosol and their potential adverse effects
- Describe the safety precautions that protect staff and patients from exposure to surgical smoke and aerosol
- Differentiate among the types of smoke evacuation systems on the market
- Discuss regulations and recommended practices related to surgical smoke and aerosol
- List factors to be taken into account when purchasing a smoke evacuation system





Advanced Surgical
Product Catalog

11311 Concept Blvd
Largo, FL 33773

www.CONMED.com