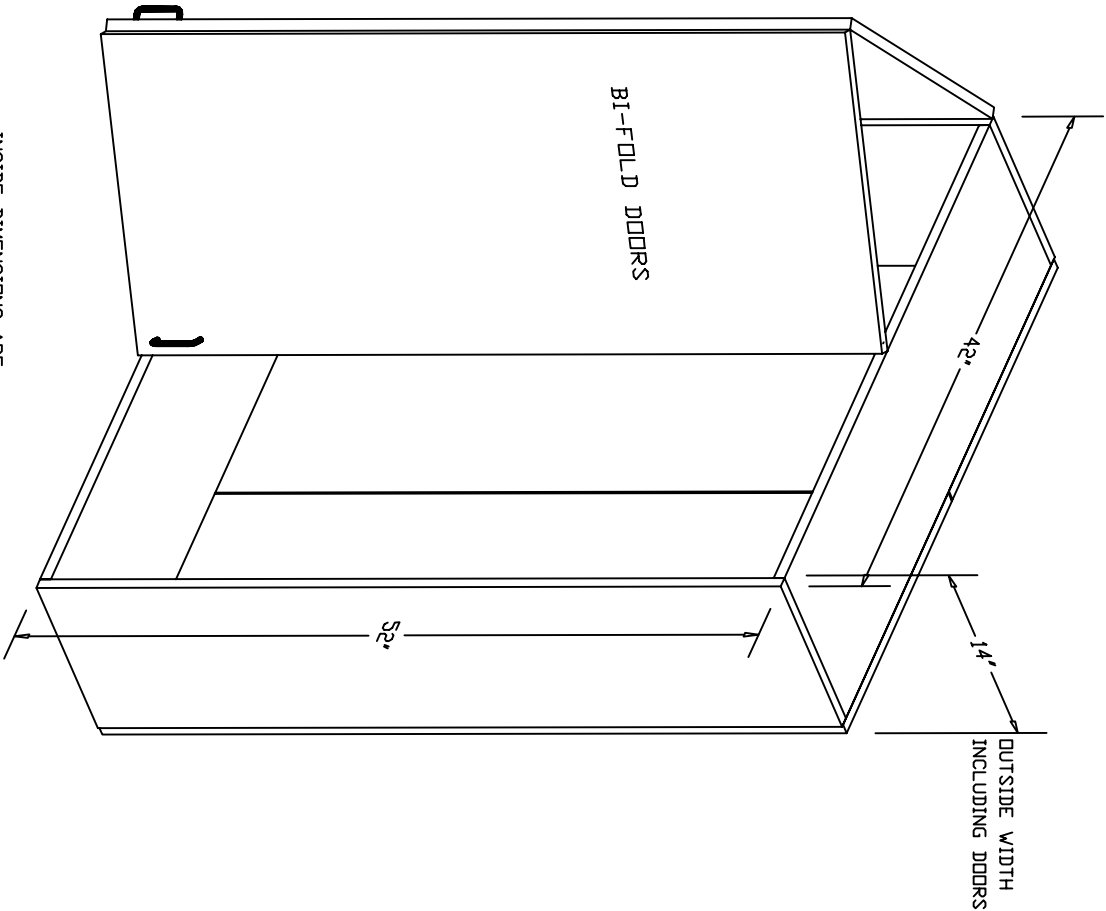
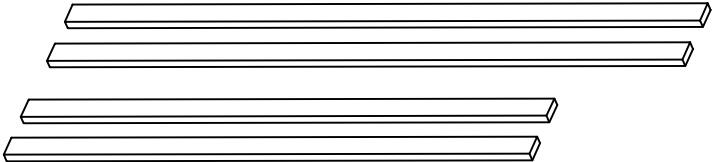


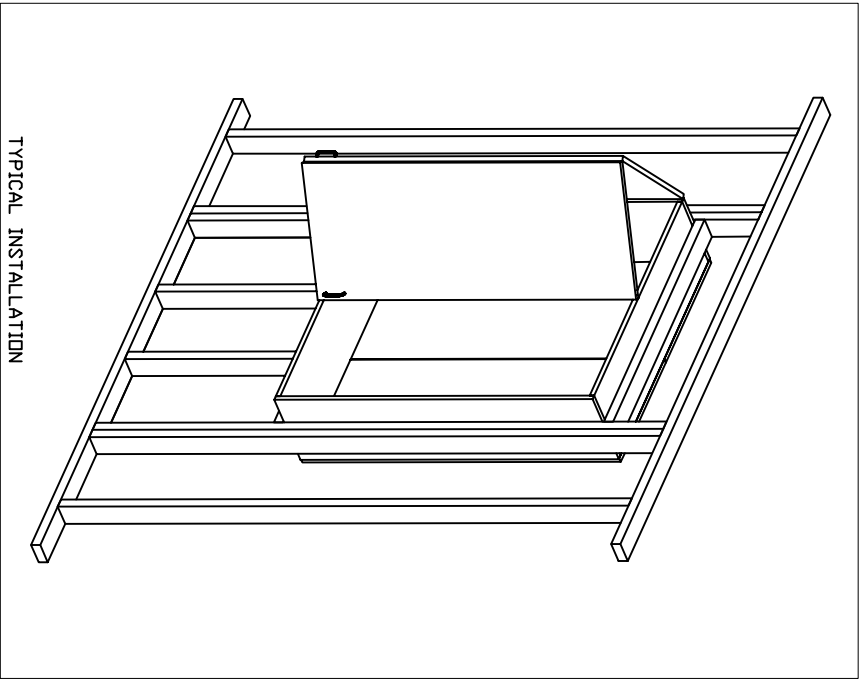
MATCHING TRIM PIECES
FOR BOTTOM, TOP, AND
SIDES ARE INCLUDED
FOR BOTH SIDES OF
CABINET



INSIDE DIMENSIONS ARE:
12-1/4" WIDE
40-3/8" LONG
50-3/8" HIGH

MAKE AND MODEL OF
X-RAY TO BE USED:

MOUNTING HEIGHT WILL DEPEND ON
X-RAY UNIT USED.
SEE MANUFACTURERS INSTRUCTIONS.



TYPICAL INSTALLATION

Standard:
High Pressure Laminate Colors
Bi-fold Doors on Both Sides
Matching Trim Kit
Handles on Doors
Cabinet Colors (Please List)

Duplication of Smart Cabinets
designs is prohibited.

Review drawing dimensions
for proper installation.

I confirm that this order is correct.
Signature: _____ Date: _____

SMART CABINETS

WWW.SMARTCABINETS.COM

PHONE: 1-877-214-1601 WICHITA FALLS, TX FAX: (940) 322-9280

For Presentation

Date: 11/14/11 Drawn By: B.C. Checked By: R.S.

Providence I
Wall Mount X-Ray Unit