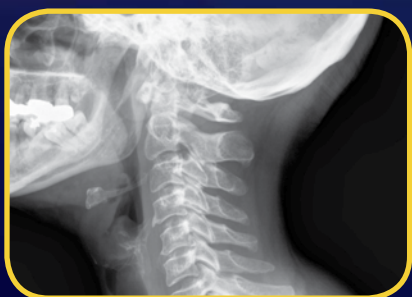


HF120/60HPPWV POWERPLUS™



*Shown with optional stand



More power, low weight and outstanding features are included in one of MinXray's most robust designs – the **PowerPlus™**. Utilizing the unique HighBurst™ design, the unit has the most powerful x-ray generator in the world which provides for clean, full and accurate x-ray power. Features that are included in the **PowerPlus™** include:

- CPU control of x-ray tube
- 5 memory stations for storing x-ray exposure techniques
- Compatible with all digital imaging modalities
- Seamless integration with DR system is available

MINXRAY[®] NC

Where you care, we're there.

HF120/60HPPWV POWERPLUS™

CONSTRUCTION	Monobloc HF generator, full bridge inverter
OUTPUT	60/42 mA @ 40-50 kVDC, 50/35 mA @ 52/60 kVDC, 45/31.5 mA @ 62-70 kVDC, 38/26.6 mA @ 72-80 kVDC, 33/23.1 mA @ 82-90 kVDC, 30/21 mA @ 92-100 kVDC, 20/14 mA @ 102-120 kVDC
KVDC STEPS	41 steps; 2 kVDC increments
mAs	0.6 - 212 mAs
TIMER	0.01 - 0.2 sec: 0.01 sec steps; 0.2 - 0.4 sec: 0.02 sec steps; 0.04 - 1.0 sec: 0.05 sec steps; 1.0 - 5.0 sec: 0.1 sec steps
X-RAY TUBE	Superior SXR-130-15 1.2
FOCAL SPOT	1.2 mm
ANODE HEAT STORAGE	65 kHU
TOTAL FILTRATION INCL. COLLIMATOR	3.2 mm Al equivalent
FREQUENCY	80 kHz
LINE VOLTAGE	100-260 VAC; 50/60 Hz
FUSE RATING	30 A
ELECTRICAL CONSUMPTION	19 A @ 120 V; 9 A @ 230 V
MAXIMUM CONSUMPTION	3.5 kVA +/- 10%
SYSTEM NET WEIGHT	96.5 lb (43.8 kg)
TUBEHEAD DIMENSIONS	16 x 8.8 x 9.5 in (40.6 x 22.4 x 23.9 cm)
TUBEHEAD WEIGHT	38.6 lb (17.5 kg)
COLLIMATOR	Collimare CPL-125-MX01-C LED
POWER CORD	20 ft (6.1 m)
EXPOSURE CORD	8 ft (2.8 m)



Ordering Information

HF120/60HPPWV PowerPlus™ Portable Medical X-ray Unit

40-120 kVDC, variable mA with CPU control,
adjustable light-beam collimator, power cord,
exposure switch and cord

XGS MKIV LW

Gas Spring Portable Mobile Stand with
16 in wheels for **HF100H+** and
HF120/60HPPWV PowerPlus™

**For more information about MinXray products,
contact your local dealer or MinXray at:**

MinXray, Inc.
3611 Commercial Avenue
Northbrook, Illinois 60062 USA
1-847-564-0323

Toll Free: 1-800-221-2245 (U.S. & CA.)
E-mail: info@minxray.com
Web: www.minxray.com

MINXRAY[®] NC

Where you care, we're there.

