

SNAPSHOT™ Intraoral sensors

One shot. Perfect image.



Technical specifications

Technical specifications			
Technology:	CMOS		
Pixel size:	19µm x19µm		
Sealing:	IP44, CMOS sensor IP67 (watertight)		
Resolution:	26,3 lp/mm theoretical		
Connection:	USB 2.0 High speed		
Imaging software:	CLINIVIEW™ XV (USA), CLINIVIEW™, TWAIN driver		
Operating system:	Windows Vista, Windows 7 or Windows 8		
Dimensions	Sensor size 1 (SC-1-2-S1)	Sensor size 2 (SC-1-2-S2)	
Active area:	1580 x 1050	1896 x 1368	pixels
Active area:	30 x 20	36 x 26	mm
	1.18 x 0.79	1.42 x 1.02	inches
Housing:	37 x 24	43 x 31	mm
	1.46 x 0.94	1.69 x 1.22	inches
Sensor cable length:	nominal 40/1.3	nominal 40/1.3	cm/ft
USB cable length:	nominal 3/10	nominal 3/10	m/ft
Dimensions	Sensor unit		
Size:	86 x 25 x 14 mm		
	3.39 x 0.98 x 0.55 inches		
Weight:	120 g/ .26 lbs		

Instrumentarium Dental develops, manufactures and markets high-tech systems and solutions for dental and maxillofacial imaging. We work in close co-operation with dental professionals, universities and other research centers in our quest to develop solutions that will meet and exceed the expectations of our customers. As the establisher of panoramic X-ray imaging, we are committed to providing high clinical performance while still maintaining simplicity, ease of use and workflow efficiency. The Instrumentarium Dental product portfolio consists of a full range of premium quality imaging solutions for intraoral, extraoral and 3D imaging. For more detailed information about our products, please visit www.instrumentariumdental.com. Instrumentarium Dental reserves the right to make changes to specifications and features shown herein, or to discontinue the product described at any time without notice or obligation. Contact your Instrumentarium Dental representative for the most current information. CE marked according to Medical Device Directive (NB 0537). Electrical safety according to IEC 60601-1. Operations comply with ISO 13485:2003, ISO 9001:2008, and ISO 14001:2004. SNAPSHOT™ / CLINIVIEW™ is a registered trademark or a trademark of Instrumentarium Dental in the United States and/ or other countries. All other trademarks are property of their respective owners.

www.instrumentariumdental.com

Headquarters

Instrumentarium Dental
Nahkelaantie 160
P.O. Box 20
FI-04300 Tuusula
Finland
Tel. +358 10 270 2000
Fax +358 10 270 2230
e-mail: info@instrudental.com

USA

Instrumentarium Dental
11727 Fruehauf Drive
Charlotte, NC 28273
U.S.A
Tel. 800-558-6120
Fax. 877-292-6050
e-mail: KKG.Imaging.CS@kavokerrgroup.com



SNAPSHOT™ Intraoral sensors

One shot. Perfect image.



Best-in-class clinical results

Why SNAPSHOT™ sensor?

The sophisticated SNAPSHOT™ sensor design produces razor-sharp uncompromised diagnostic visibility and unsurpassed image quality. A wide dynamic range ensures successful images time after time.

- Lower noise ensures razor-sharp images
- Small, 19µm pixel size provides high resolution
- CMOS chip will not bloom even in the event of overexposure

Software finishes image quality

The SNAPSHOT™ sensor's imaging software is a sophisticated tool for professional dental radiography. SNAPSHOT™ sensor is compatible with most imaging software through its TWAIN driver.

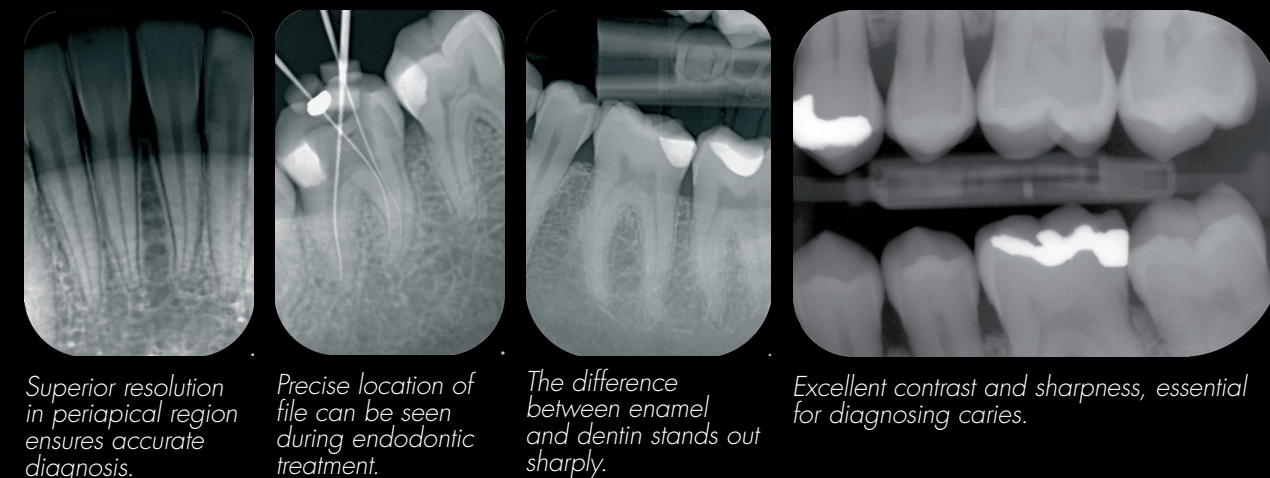
Truly portable sensor with a small footprint

The SNAPSHOT™ sensor has smart, integrated electronics. There are no separate boxes lying around in limited workspace environments. A convenient wall-mounted storage device provides you a safe and convenient place to store SNAPSHOT™ sensor when not in use.



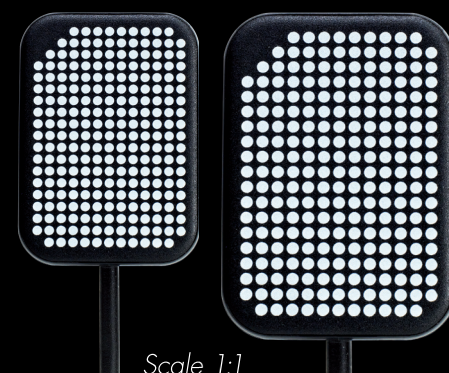
Improved cable exit
Optimized cable location allows for improved patient comfort including vertical positioning in periapical imaging

A perfect tool for all intraoral purposes



Sensor size 1
37 x 24 mm
1.46 x 0.94 inches

Sensor size 2
43 x 31 mm
1.69 x 1.22 inches



Scale 1:1

Designed for the patient

Patient comfort for better clinical results

Smooth shape with four rounded corners and thin sensor housing provides better patient comfort. A more comfortable patient experience results in better clinical images with less retakes.

Sensor graphics helps positioning and orientation

The white visual aides on the sensor surface aides in patient positioning within the oral cavity. A "thumb-mark" on the image helps to determine the correct orientation even when it might not be clear from the anatomy visible in the image.

Set it and forget it

Just press one button

Take almost every intraoral image with just one exposure setting. SNAPSHOT™ sensors wide dynamic range provides excellent images all of the dentition without changing the exposure settings on your X-ray device.

Long-lasting performance

Sensor design with carefully selected materials delivers long-lasting performance. SNAPSHOT™ sensor is tightly sealed for easy cleaning. The waterproof sensor can even be immersed for disinfection.

Truly plug and play

SNAPSHOT™ sensor is ready for use just by plugging the USB cable into the computer. The sensor is detected automatically and all of the needed drivers are copied directly from the sensor without user action. Sharing the sensor between operatories is particularly convenient.

